



Zero Downtime™ – Autonomous  
Broadband Connectivity™

# Self-Healing, Managed Connectivity Solutions

Empowering SMBs, Enterprises, MSPs, ISPs,  
ISVs, Governments, & The Military



## Akative® - Revolutionary Connectivity Technologies

When Steve Jobs introduced the iPhone, little did the world know that the elegant simplicity would literally change our world forever.

Now we stand at a new intersection of revolutionary new cellular technologies, AI, self-driving vehicles, an explosion in IoT devices, as well as satellite connectivity from StarLink®. We know that it's only a matter of time before businesses will harness these new technologies to improve efficiency, eliminate downtime, and power the next revolutions in data connectivity.

As we grow Akative, we're revolutionizing the way businesses manage their data connectivity. We're actively building new AI-powered self-healing network technologies and pioneering state-of-the-art advances in data security and connectivity management.

All that may sound complicated, but Akative strives to make complex things really simple. We take a customer-first, UX-first approach and engineer solutions to deliver unprecedented value for our partners and our customers.

Our Akative family of products is designed to allow businesses to get up and running quickly. With a full-spectrum of technologies, IT teams don't need to do complex testing, and business teams don't need to ink data connectivity contracts with multiple cellular carriers. In a world of complexity, simpler is better.

We welcome you to explore the power and features of our Akative solutions and reach out to our team to discover how you can leverage these products to gain a competitive advantage.

# About Akative®

- p. 4 **Akative®**  
Underpinned by our award-winning iStatus connectivity management platform. Akative technologies empower MSPs, VARs, ISVs, SMBs, Enterprises, Governments, and the Military to quickly deploy and support self-healing managed connectivity solutions.

## Our Solutions

- p. 6 **RocketFailover®**  
Say goodbye to Internet downtime with the market-leading, turn-key, 4G/5G failover connectivity solution. Eliminate downtime with built-in monitoring, security, unprecedented value, and proven reliability.
- p. 10 **iStatus®**  
The world's leading distributed, connectivity management solution. It's enabling connectivity and security monitoring across multiple customers, carriers, locations, and VLANs in multi-vendor heterogeneous networks.
- p. 16 **InternetAnywhere®**  
Go-anywhere, high-speed Internet access with unlimited data for diverse IoT applications ranging from mobile construction sites to popup shops and more.
- p. 18 **VitalConnectivity®**  
Multi-carrier, high-availability Internet connectivity for mission-critical applications such as E911, Hospitals, Enterprise, Military, and Government.
- p. 20 **AkativeSD™**  
Integrated 4G/5G-based SD-WAN connectivity for maintaining the usage of business critical applications such as VoIP and teleconferencing.



# Akative™

## Enabling Next-Gen Connectivity as a Service™ With iStatus®

### Evolving Technology

Over the past few decades, the Internet has gone from being a thing that you connected to, to a thing we depend to always be available. Technology has advanced from modems to broadband, direct-fiber, 4G-LTE, 5G and now, with companies like Starlink® — worldwide high-speed Satellite connectivity.

At Akative, we focus on developing iStatus® to be the world's best connectivity management platform that enables businesses with Connectivity as a Service™. iStatus enables MSPs, ISPs, ISVs, Governments, the Military, and everyday businesses to quickly integrate connectivity of any type. iStatus works across thousands of customers, with hundreds of thousands of locations using a variety of hardware and data vendors while maintaining visibility to critical connectivity from the perspective of each individual location.

### Empowering Businesses

Businesses host Business Critical Applications (BCAs) in the cloud. Other services such as VoIP and video conferencing demand constant connectivity. However, maintaining uninterrupted connectivity across hundreds or thousands of locations presents considerable challenges even to the most well-organized businesses.

iStatus takes a unique approach to solve these problems, empowering businesses to implement any form of primary data connectivity combined with low-cost backup connectivity. It also simultaneously adds critical visibility for the businesses, agencies, MSPs, ISPs, or ISVs who implement iStatus.

## Manage & Monitor What Matters Most to Your Business

iStatus brings powerful tools to monitor critical devices and cloud services and also provides essential tools that enable businesses to know what devices are on the network and to detect low-level network attacks.



Essential data connectivity monitoring so that businesses know that outlying locations are online.



Proactive testing of backup data connections utilizing patented ConnectionValidation™ technology.



Intelligent AI & ML based alerts provide insight into network operation and bring network information down to a point where managers and other key stakeholders also have visibility.



Network Performance Monitoring, so that businesses know that cloud hosted apps are available across all locations using patented CongestionDetection™.



Security monitoring so that businesses can detect rogue devices or other critical security changes.



iStatus Pinpoint™ to detect the precise point of connection failure and remedy a solution to conserve on costly troubleshooting.



Data usage monitoring across multiple locations, multiple devices, and multiple data carriers.

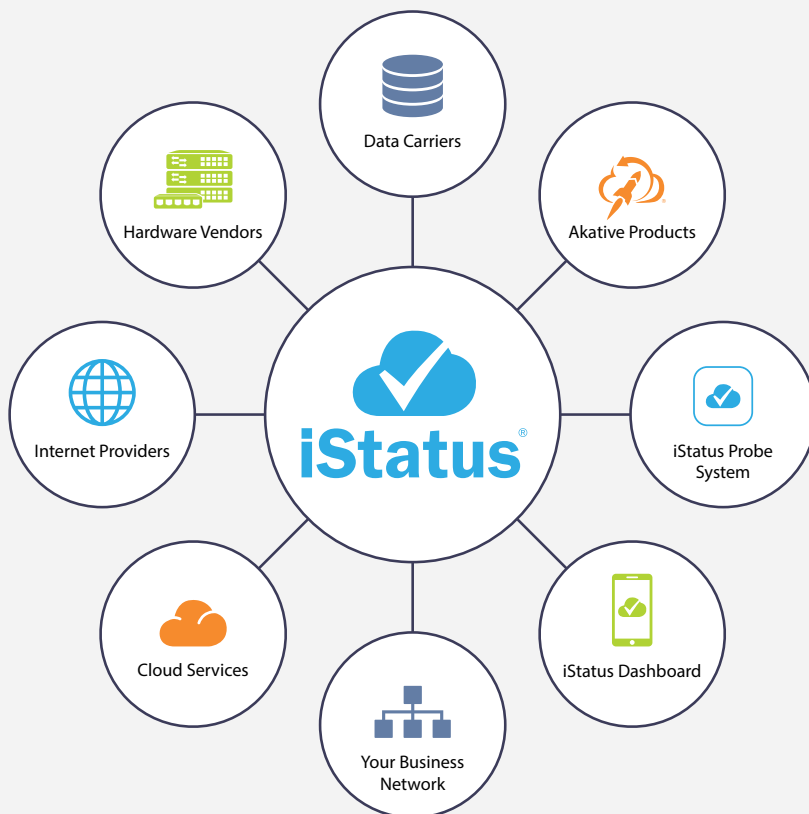


Patented SD-WAN FlowTracking™ enables businesses to monitor SD-WAN traffic flows across hundreds or thousands of locations.

## Integrating Connectivity

iStatus acts as an essential glue-layer for companies as they seek to integrate many forms of connectivity, from different broadband, cellular, and satellite vendors. In addition, iStatus provides an essential layer of visibility across multiple businesses, locations, data carriers, hardware, and networks.

This integration and diverse visibility paired together into a single platform, revolutionizes the way businesses manage their network and connectivity.



Read more about iStatus features and capabilities on page 10.



**Over 32 Million**  
**Hours Of 4G**  
**Failover Uptime**

## RocketFailover<sup>®</sup>

Say Goodbye To  
Internet Downtime

---

Did You Know?

In May of 2020 Amazon was down for only 15 minutes and reported a loss of \$6.6 million.<sup>1</sup>

### Tested, Customized, & Proven To Work

As core business services have moved to the cloud, the need for 100% connection uptime is critical. Failover is an excellent way for businesses to implement redundant Internet connectivity. RocketFailover<sup>®</sup> is the world's leading backup Internet solution to protect businesses of all sizes.

RocketFailover stands above other 4G/5G backup solutions because it has both automatic failover and failback capabilities to save businesses unnecessary data usage. When the primary Internet connection fails, traffic is automatically routed to the RocketFailover connection and alerts are sent so you know to contact your ISP.

Note 1 - Amazon Went Down For 15 Minutes & Jeff Bezos Lost More Money Than An Average American Will Earn In A Lifetime.

## Keep Your Business Up, Even When The Internet Goes Down

Akative has pioneered the use of backup Internet technology to provide seamless uptime for business-critical applications. As a result, RocketFailover is customized to fit each business network. Whether your office is running a VoIP phone system or a Point of Sale system, RocketFailover works efficiently and helps businesses work towards Zero Downtime™.

RocketFailover offers a complete, easy-to-install solution that provides a secondary Internet connection with automatic connection failover/failback, 4G/5G LTE data service, hardware, optional static IP, and iStatus® connection monitoring. RocketFailover also consolidates data usage across carriers, allowing you to have one solution for highly reliable connectivity across all of your locations.

Unlike other solutions, RocketFailover enables you to maintain visibility of your primary connection when failed over.



## RocketFailover Key Features



### iStatus®

iStatus helps unite IT teams and managers with vital connection information. With 24/7 monitoring and reporting, iStatus provides push notifications, email alerts, and ConnectionValidation™ to allow your business to stay ahead of IT problems.



### Nationwide Coverage & Unlimited Data

From coast to coast, our powerful, nationwide 4G/5G coverage ensures your business will remain connected. With Akative Nationwide Unlimited™ data plans available, you know that your data needs will be met.



### ConnectionValidation™

ConnectionValidation is a patented iStatus technology that allows continuous testing and validating of backup connections to ensure our AlwaysOn™ 4G/5G is ready when you need it most.



### Carrier Agnostic Data Pooling

Share data across all of your business locations regardless of the carriers being used. Data pooling helps lower the risks of overages and delivers huge potential savings.



### Secure, PCI/HIPAA Compliant

Our technology effortlessly integrates with your network, keeping you secure along with your customer's data. With Live-In-Five™ pre-configured hardware, installation is simple and cost savings are huge compared to other secondary connection options.



### World Class In-House Support

RocketFailover is supported by our Forever Warranty™ and our U.S.-based, world-class support team. With experience in successfully supporting IT needs, you can be assured you're in good hands.

# RocketFailover Has Multiple Versions



## RocketFailover Autopilot™

RocketFailover Autopilot is a versatile solution that can work with any existing network. Autopilot is ideal for small and simple networks. Autopilot is the best solution for networks that do not have a firewall or networks with a firewall that doesn't support multi-WAN or dual-WAN configurations.

Businesses that use Autopilot are typically small offices, but also include healthcare, restaurants, and retail.



## RocketFailover Fusion™

RocketFailover Fusion is ideal for complex networks with a firewall that supports a multi-WAN or dual-WAN configuration. Fusion was built with multi-site businesses in mind, such as franchises and chain stores, but also works great for single location businesses.

Businesses that use Fusion often include retail, convenience stores, restaurants, manufacturing, healthcare, and more.



# & Is Customized To Fit Your Network



## RocketFailover Complete Security™

RocketFailover Complete Security is ideal for businesses with complex networks that would like a fully managed firewall in addition to failover services. Complete Security allows for more granular control over your business network traffic out of all the RocketFailover solutions.

Businesses that use Complete Security include retail, convenience stores, restaurants, manufacturing, healthcare, and more.



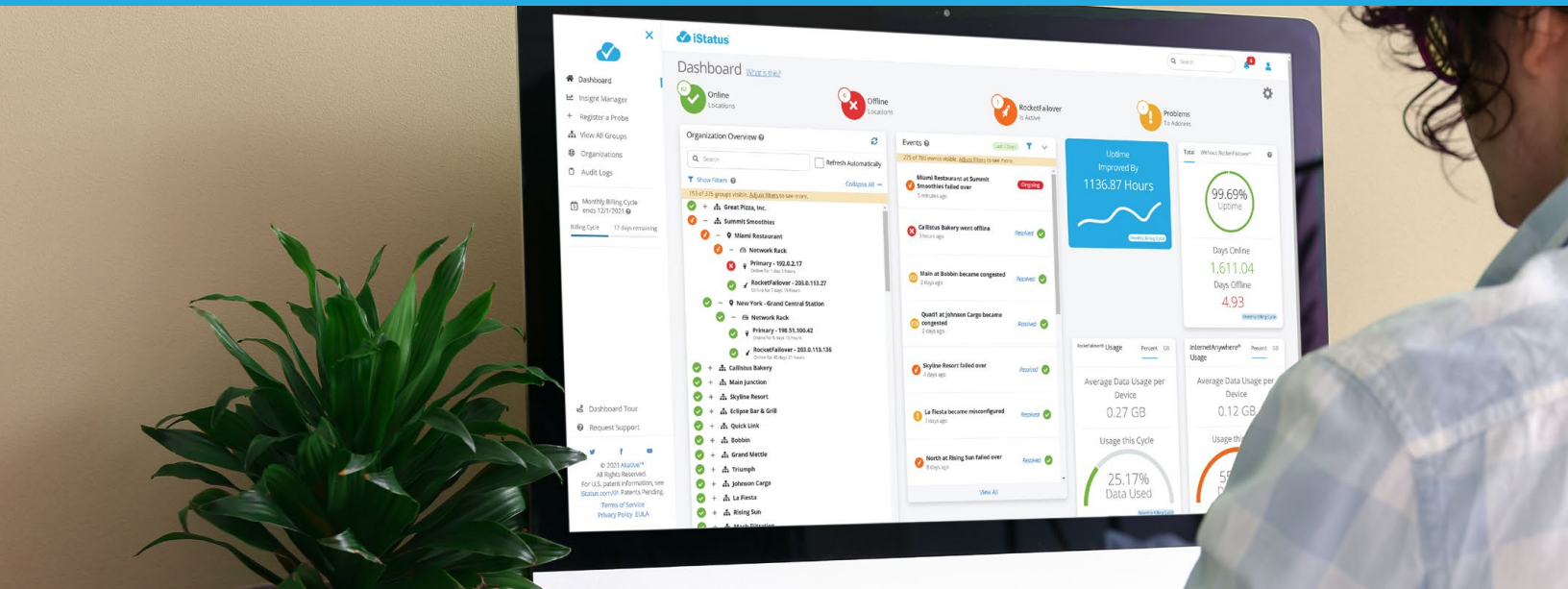
## RocketFailover POS-Unlimited™

RocketFailover POS-Unlimited is for businesses that would like to have a failover solution for only the Point of Sale (POS) traffic. By keeping your POS online 24/7 with a backup connection, your sales transactions will not be interrupted by Internet downtime.

POS-Unlimited is ideal for retail, restaurants, and convenience stores.

## DualFailover®

Add DualFailover to your RocketFailover solution and have access to two major cellular carriers. DualFailover is a dual-SIM, single-radio device that can be switched between two carriers. When one carrier's signal strength has issues you can change your connection to the other carrier for a stronger connection.

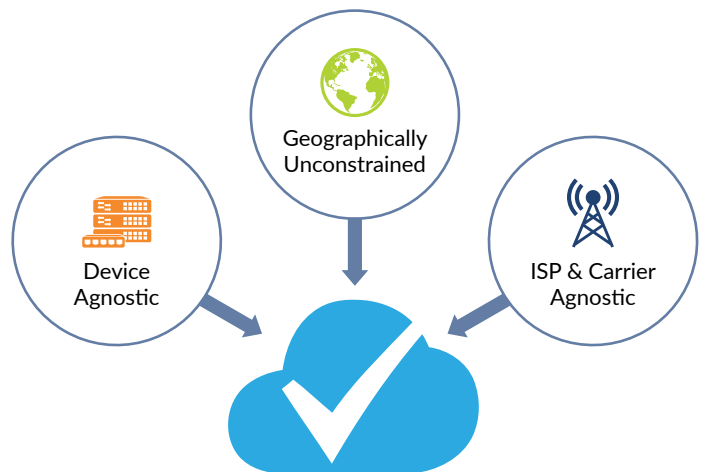


# iStatus<sup>®</sup>

## Award-Winning Distributed, Connectivity Management Platform

### Empowering Connectivity as a Service™ For Critical IT Applications

Monitoring and managing the connectivity of your business is easier than ever—no more weeding through complex data to figure out network problems. iStatus enables you to view the status of your Internet connections, monitor your data usage, and improve performance for business critical applications in a single pane of glass.



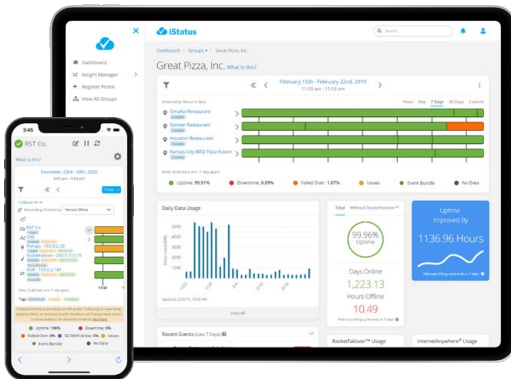
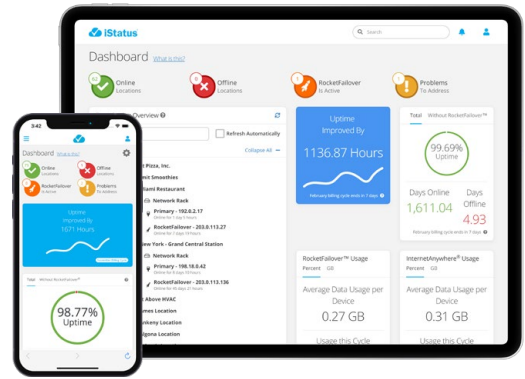
Compact IoT iStatus Probe

### Easy-To-Deploy iStatus Hardware Probe

- A compact, powerful, ready-to-deploy IoT device
- Highly secure with no open ports or services
- Extremely reliable, using a solid-state design
- Environmentally friendly, low energy usage, & minimal hardware footprint
- Akative manages software & firmware updates for you

## Dashboard

Ideal for complex, multi-location networks and companies that rely on cloud services, the iStatus Dashboard gives you a birds-eye view of all remote location Internet connections in real-time. Quickly view the ConnectionStatus™ of locations and view primary and backup connections. iStatus helps quickly identify which locations require attention from the convenience of our smart app.



## ConnectionValidation™

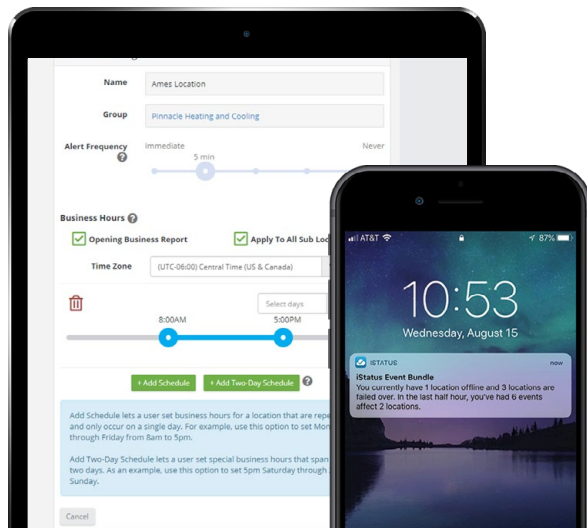
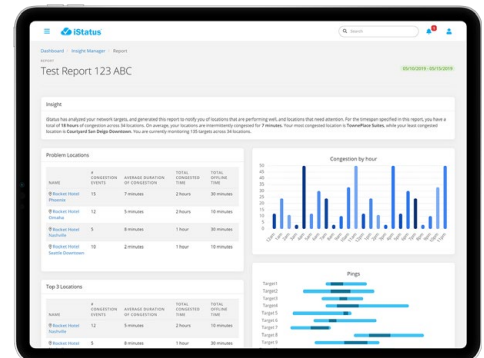
ConnectionValidation is a patented iStatus technology that continuously tests and validates your backup connections to ensure our AlwaysOn™ 4G ready at a moment's notice. With peace of mind verification, ConnectionValidation ensures that in the event of an ISP Internet outage, your business operations remain seamless.

The Timeline view enables you to see the connectivity status of your locations and connections in different time increments.

## Historical Reporting

NPM reporting provides historical and periodical analysis of network performance issues on LAN and WAN network segments. We measure these in terms of quantity, frequency, and duration of sustained and intermittent congestion events.

With this reporting, C-suite executives can set standards, measure performance, and build initiatives to bring the locations that are under-performing up to desired compliance.



## IntelligentAlerts™

iStatus unites IT professionals, and business staff with simple network alerts. When any connectivity issue is detected, iStatus sends IntelligentAlerts™ via push notifications and/or email. IntelligentAlerts include pertinent, understandable information to eliminate guesswork and help you quickly resolve the issue.

iStatus uses bulk notifications to reduce inbox overload, making it easy to manage multiple networks at once.

## Improve Your Network Health By Monitoring



Key Cloud Applications



Key Local Resources



Bandwidth Sufficiency



Internet Congestion



Internet Connectivity



Network Protocols

# iStatus NPM™ (Network Performance Monitoring)

## All-in-One AI Monitoring For Your Network Health

### Endless Monitoring Possibilities

Business networks today have become increasingly complex and support countless operations and network-connected devices.

iStatus NPM (Network Performance Monitoring) solves these management challenges with revolutionary AI technology to monitor additional network targets. With the ability to monitor up to 20 targets per probe, iStatus NPM can monitor various applications, devices, and protocols on your LAN and WAN network.

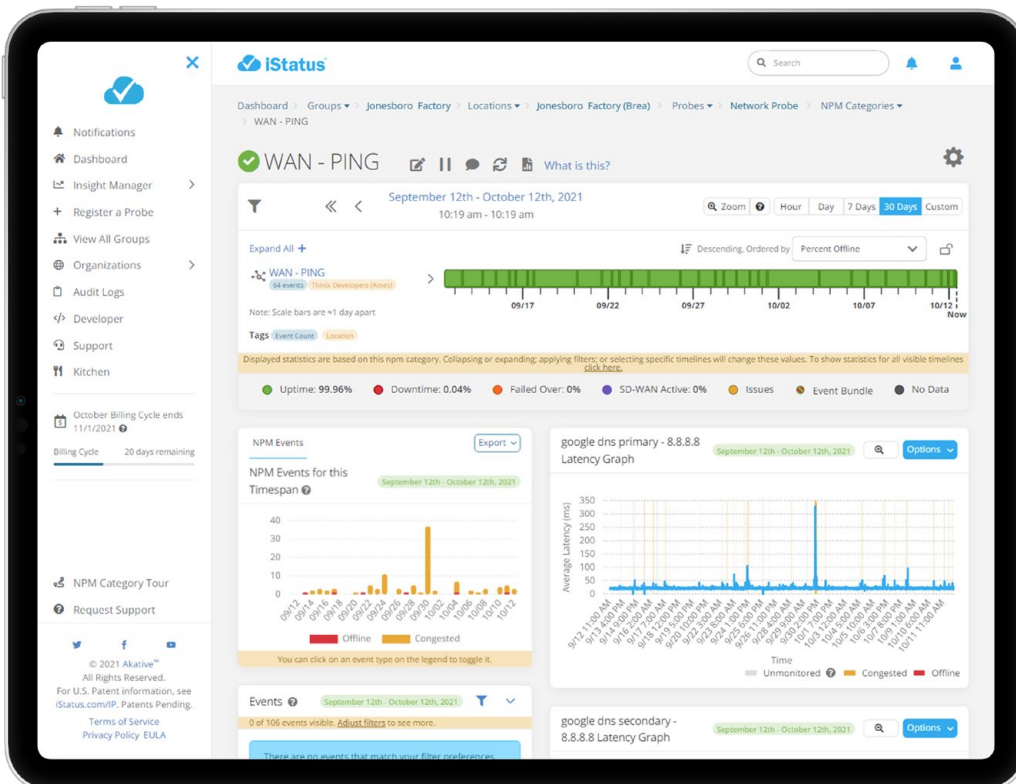
### CongestionMonitoring™

iStatus NPM provides Web App Performance Monitoring/Web App Health Monitoring by tracking intermittent and sustained network congestion issues that weren't previously observable. iStatus NPM detects congestion issues and sends an alert to IT staff to help identify where the problem is, what may be causing it, and apply a solution.

### Latency Graphs

Easily see how well your connections are performing with NPM's Latency Graphs. With every network target monitored by a probe, iStatus displays all of your data on a single screen.

This allows you to quickly and effortlessly compare your network targets to determine if the issues lie within your network or outside of it. By adjusting the time span shown you can see what's happened over the course of a month, or drill down into a single day.



# iStatus Pinpoint™

## Precise Network Failure Detection & Remedy

iStatus Pinpoint further utilizes the AI-powered functions of iStatus to monitor and detect which portions of network segments are experiencing a network-interrupting connection failure. Pinpoint dramatically reduces downtime and troubleshooting time by automatically discovering the root cause of the network connectivity failure.

Pinpoint monitors the Internet paths coming to and from your network 24/7. In the event that an outage occurs that will impact business operations, Pinpoint prevents the need for costly IT diagnostics and reduces labor costs through automation (even on weekends and holidays). With Pinpoint, your business doesn't need to dispatch a technician to the site in order to troubleshoot the connectivity issue.

iStatus Pinpoint™ for Primary connection - Example

Horizontal Bi-directional Normal View Options

iStatus Pinpoint continuously monitors your path to the internet and pinpoints the exact point of failure when your network goes into a failover state.

Contact List: Default Contact List Notifications: Point of Failure Monitoring

**Current Bad Bi-directional Path - Oct 28, 2021, 10:34:59 AM**

Default Gateway ISP

iStatus Probe at Location Internet

**Active Pinpoint Events**

iStatus Probe at Location has pinpointed the point of failure on the path to the Internet **Ongoing** 4 minutes ago

**Last Good Bi-directional Path - Oct 28, 2021, 9:40:37 AM**

Default Gateway ISP

iStatus Probe at Location Internet

**Internet Service Provider Information**

Here is relevant information about your ISP, Example ISP, in case there are issues on their end. You can contact them by calling their support number above.  
Location: Location  
External IP: Example ISP

Pinpoint monitors your connections to & from the Internet to identify the exact point of failure. In the examples above, the top bi-directional path is experiencing an interruption. This creates an ongoing iStatus event that tells you where the issue is so you can quickly resolve it. The bottom bi-directional path shows a healthy connection to and from the Internet.



Eliminates lengthy troubleshooting, and saves a lot of IT resources, time, frustration, and expenses.



Autonomously monitors the path to the Internet and pinpoints the exact cause of your lost connectivity.



Get solutions based on the identified cause to best resolve the issue and restore connectivity.

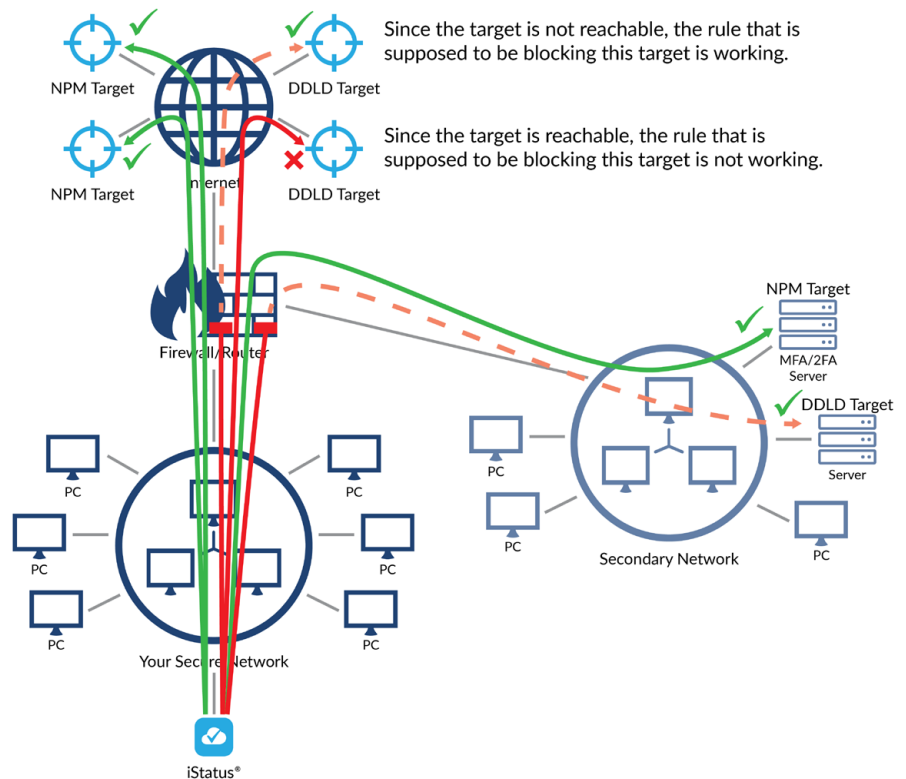
# iStatus DDLD™ (Dynamic Data Leak Detection)

## Verify Your Security Policies Are Working

### iStatus DDLD Helps Detect Security Policy Errors Or Changes

Detect when devices on your network can access things they should not be able to access – iStatus DDLD™ (Dynamic Data Leak Detection) allows you to set up rules that are tested by the iStatus probe. For example, if you have a secure PCI network, you may have cash registers that are allowed to communicate with Point-of-Sale servers, but you configure those networks so that devices on the secure network cannot communicate with Google or Facebook.

With DDLD, you can quickly set up DDLD targets that are tested 24/7 to ensure that these communications are always blocked. DDLD targets can be computers on a LAN, VPN, or targets on the Internet, including HTTP traffic. If DDLD is able to access a network target, a DDLD (data leak) event is generated, logged, and an alert is sent to you via email.



## Quickly Notice Policy Changes & Enhance Network Security



Detect when filtering on a WAN connection for a LAN/VLAN is not working or is misconfigured.



Detect unexpected security changes and when VLAN to VLAN traffic firewall rules are not working or are misconfigured.



Detect malicious and advanced time-based attacks in instances where network infrastructure is compromised.



Effortlessly document your network and manage key security information across multiple locations to stay current.



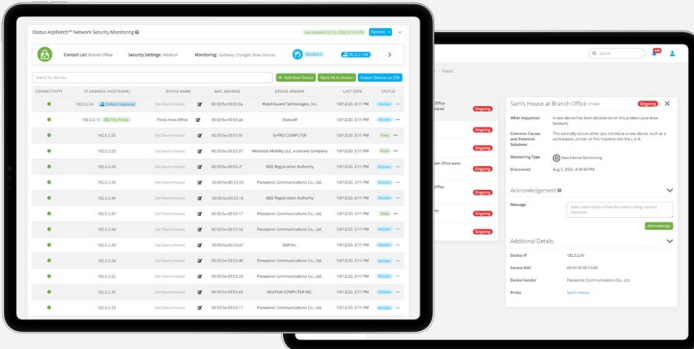
Establish a baseline to know what devices are normally on your network, what DNS servers are in-use and document other key security metrics such as the gateway MAC address.



Built-in audit trail helps you manage network security with multiple users and know who did what and when.

## iStatus ArpWatch™

### Easily Detect New & Rogue Devices On Your Network



ArpWatch also detects ARP poisoning and man-in-the-middle attacks to offer further insight. Easily monitor all of your network segments (while they remain isolated) without violating network security.

### Protecting Your Network From Rogue Devices

Even with network security in place, it is difficult to notice new devices accessing your network. An attack from a rogue device can result in data and financial loss.

Existing device detection solutions, such as a Network Access Control (NAC) system or an Intrusion Detection Solution (IDS), on average, require a six-digit budget. iStatus ArpWatch allows detection of new devices as they appear on your network at a fraction of the cost.

## iStatus ChangeDetection™

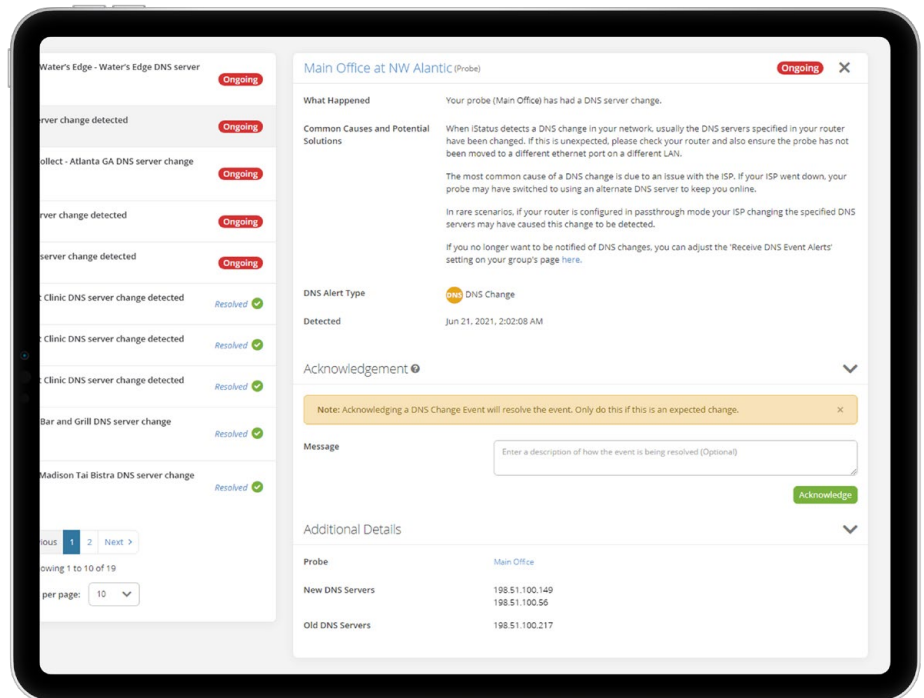
### Detect Critical Network Security Changes

#### React Proactively & Keep Your Network Secure

Maintain the security of your network with iStatus ChangeDetection. iStatus establishes a network baseline and automatically documents critical network attributes such as the DNS servers that are in use, the MAC address of the default gateway, and the IP addresses of servers and other network devices.

iStatus then monitors your network 24/7 and alerts you when it detects a critical network security change, such as an alteration to the DNS, indicating a misconfiguration, or worse, a possible cyberattack.

#### Detect Critical Gateway & DNS Security Changes



Easily safeguard your network at a fraction of the cost with iStatus ChangeDetection. Typically it's hard to notice changes to DNS servers or gateway MAC addresses, but iStatus ChangeDetection monitors your network 24/7. When it discovers a change, it alerts you and suggests the appropriate actions to take.



# InternetAnywhere®

## Go-Anywhere, High-Speed Internet Access

---

### Stay Connected

InternetAnywhere is a managed, 4G/5G cellular Internet connection designed for rural, remote, mobile, and redundant connectivity applications. With InternetAnywhere you can experience the speed and convenience of broadband Internet almost anywhere within the continental United States. Easy to install and hassle-free, InternetAnywhere is preconfigured as a plug-and-play technology.

InternetAnywhere delivers a business-class Internet connection with high-reliability via a commercial-grade cellular modem. Customized for a wide variety of applications, InternetAnywhere can function for both business and leisure applications. With our AlwaysOn™ 4G, the connectivity doesn't go to sleep like other consumer-grade options, making it an ideal solution for rural farming applications, pop-up shops, emergency response personnel vehicles, mobile RVs, and more.

### How It Works?

Pre-configuration makes installation simple and quick; just place the device in your vehicle or building. InternetAnywhere provides a secure, static IP address that receives a signal via high-power, built-in, or external antennas from the cellular network. This specialized cellular modem provides a higher-performance rate and connection strength than other consumer-grade options.

Complete with an Akative Nationwide Unlimited™ data plan (capped at 300 GB/month) and a convenient pay-as-you-go business model, InternetAnywhere allows you to connect anytime and anywhere you need.

**InternetAnywhere®**  
Go-Anywhere, High-Speed Internet Access



## Key Features:

- Akative Nationwide Unlimited Data<sup>1</sup>
- Nationwide 4G LTE Coverage
- Rugged Mobile Internet Connectivity
- AlwaysOn™ Mobile WiFi Hotspot
- Preconfigured 4G Modem
- Low Cost Connectivity
- Simple Billing Options
- No Contract Service



## Emergency & Disaster Relief

When disaster strikes, it can be devastating to both telecommunications and power infrastructures. With InternetAnywhere, emergency response personnel can connect to 4G/5G coverage to make calls and communicate where and when it is needed most.

## Pop-Up Shops

During busy-season, businesses can't afford to have Internet connectivity issues. With convenient, portable hotspot technology, InternetAnywhere brings connectivity to any pop-up location and can travel along with the mobile retailer; no hassling with providers or lengthy required setup.



## Leisure & Travel

For recreational vehicles (RVs) InternetAnywhere is ideal because it provides connectivity on the road without the hassle of stopping at a rest stop or a campground just to connect to the Internet. With Akative Nationwide Unlimited™ data plans and 24/7 connectivity, travel planning, regular web browsing, staying connected, and streaming movies is more easily accessible.

## Construction Sites

InternetAnywhere provides reliable connectivity via its AlwaysOn 4G WiFi hotspot on job sites without access to ISPs. This enables construction crews to access their online project management systems, order materials, schedule crews, and more.





# VitalConnectivity<sup>®</sup>

## Internet Connectivity For Mission Critical Applications

VitalConnectivity is a fully managed solution that enables businesses to quickly deploy dual-carrier Internet connectivity anytime and anywhere it is needed. With a simple, easy-to-install hardware appliance, VitalConnectivity provides Internet connectivity from two different major 4G/5G carriers.

### Connectivity Just Got Easier

By combining blazing 4G/5G LTE speeds and reliable hardware into a single, convenient solution, we make it simple to deploy dual-carrier Internet connectivity. Obtaining reliable, lightning-fast coverage for multiple locations is now easier than ever. No more hassling with multiple providers, or lengthy required setups. Connect your phone, tablet, or wireless point-of-sale systems simply by plugging in VitalConnectivity.

### Why use Dual-Carrier 4G/5G?

Before VitalConnectivity, when reliable Internet connectivity was needed, dual broadband connections (relying on copper or fiber) were implemented. However both connections are often lost simultaneously because many times the two broadband connections share the 'last-mile' (the same conduit or the same physical path).

For this reason, we designed VitalConnectivity to enable businesses to use either dual-4G/5G connections or a broadband connection with dual-4G/5G connections as a backup.



VitalConnectivity Device & iStatus Probe

## Key Features:



Dual-Carrier 4G/5G LTE connectivity



Live-In-Five™ gets you up & running quickly



Unified monthly billing for multi-locations



Eliminates 'last-mile' outages & limited ISPs



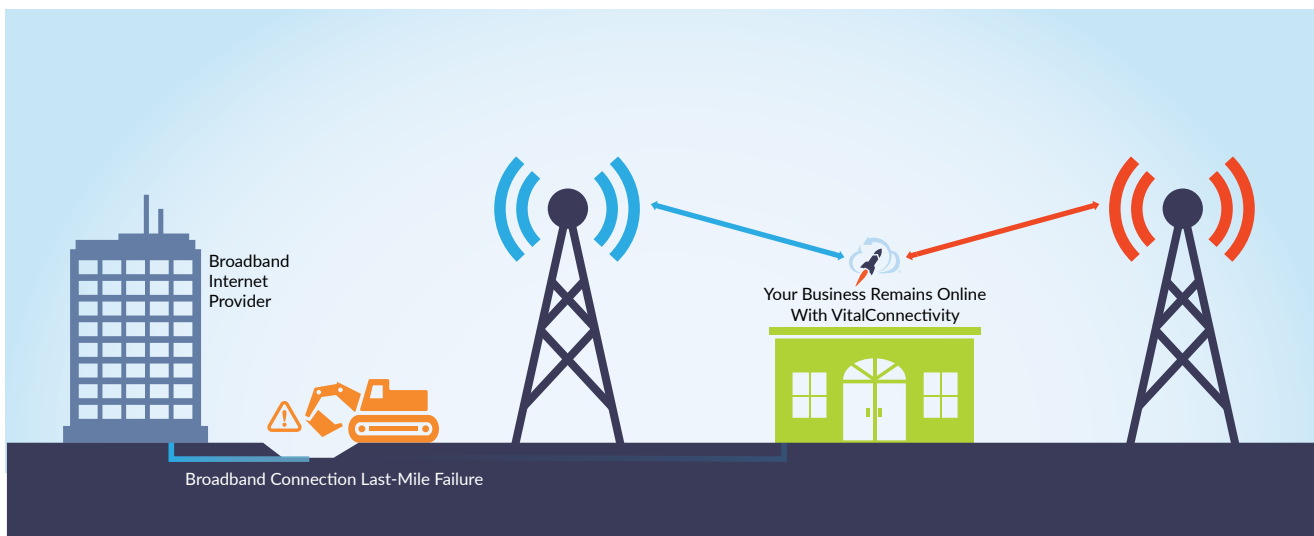
Effective, low-cost solution with data pooling



iStatus monitoring with ConnectionValidation

## Solving Last-Mile Failures

VitalConnectivity solves 'last-mile' problems by utilizing dual (diverse) 4G/5G connections to different carriers with automatic connection switching to keep you online 24/7. VitalConnectivity also helps businesses that have limited ISP options by providing them with reliable 4G connectivity.



Should your broadband connection experience a last-mile failure, your business will stay online with 4G connectivity. By having dual-carrier connectivity you ensure that your traffic uses the best Internet connection for faster operations. Should your business be located where broadband connectivity isn't available, VitalConnectivity can provide both your primary and backup connections.

## Proudly Supporting Industry Leaders In:

- Multi-Location Retail
- Grocery & Convenience Stores
- Banking & ATM's
- Security & IoT applications
- Restaurants & Food Services
- Healthcare & Veterinary Facilities
- State, Local, & Federal Government
- Military & National Guard



# AkativeSD™

## Integrated 4G/5G/SD-WAN – Maintaining Connectivity For Business Critical Applications

Businesses today rely on business critical applications that simply cannot be down. However, businesses are at the mercy of their Internet service provider (ISP) when it comes to reliable and stable connectivity.

AkativeSD™ overcomes ISP issues by enabling backup Internet connectivity via 4G/5G to empower businesses with stable connectivity for their critical applications. AkativeSD combines an enterprise class SD-WAN firewall, 4G/5G LTE connectivity, iStatus monitoring and alerts, with iStatus FlowTracking™.

AkativeSD is a fully managed solution with SD-WAN-based configurations to enable portions of your network traffic to be rerouted to a backup connection.

This mitigates ISP limitations when issues such as latency, congestion, or jitter are experienced on your primary connection. This allows your firewall to steer mission-critical traffic to use the best connection available resulting in improved performance and quality for your business critical applications.

### Key AkativeSD Benefits:

- Integrated solution simplifying SD-WAN deployments
- Fast, reliable performance for VoIP & business critical applications
- Integrated iStatus® monitoring, & IntelligentAlerts™
- Eliminate labor costs with a fully managed solution

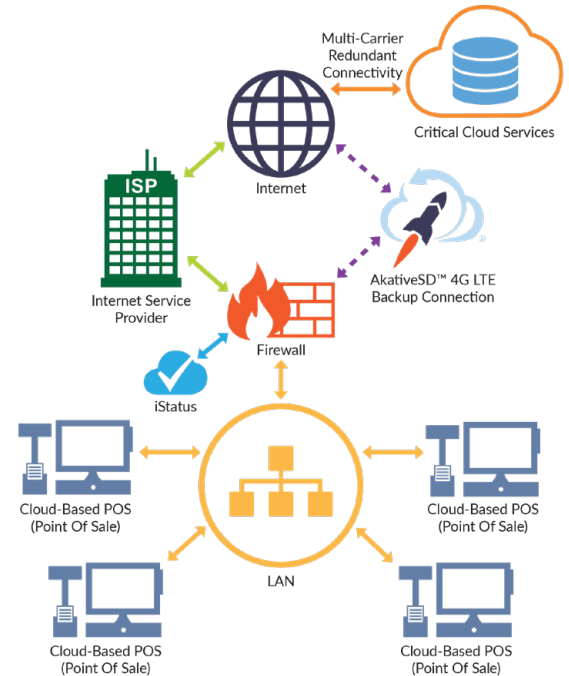
## How AkativeSD Can Enhance Your Business

For example, say a restaurant is using cloud-based point of sale (POS) system and has a single Internet connection which is shared with many facets of the business. Whenever the Internet is congested (slow), the POS system fails, resulting in unhappy customers.

To solve the problem, the restaurant installs AkativeSD, providing a complete SD-WAN solution which can route the critical POS traffic over a 4G/5G based connection whenever the primary Internet experiences congestion.

After AkativeSD is installed, the POS system works reliably without any intervention from the IT team or the restaurant staff. Business continuity is maintained, customers are happy, IT is happy, managers are happy, and costs are managed.

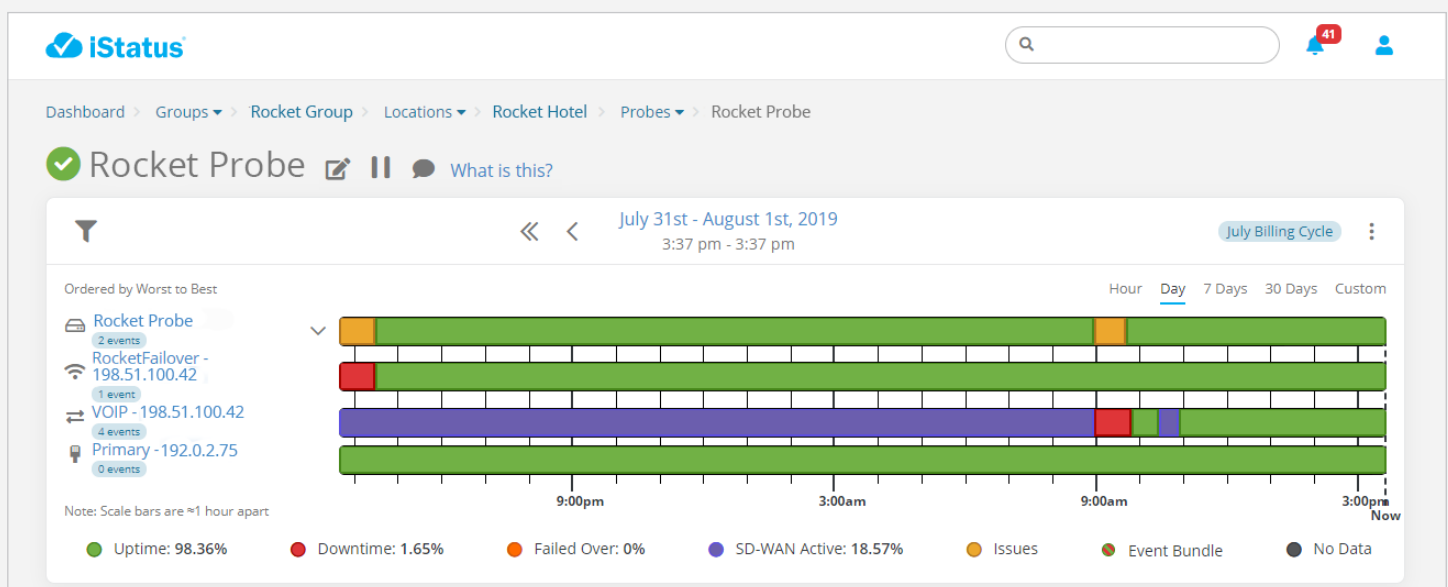
AkativeSD also includes iStatus monitoring which provides traffic flow and downtime alerts to the IT team and key stakeholders to alert them of relevant events.



## iStatus FlowTracking™ - Traffic Flow Monitoring For SD-WAN Implementations

Major VoIP providers have expressed ongoing challenges when implementing VoIP service for their customers due to unpredictable Internet service. While their technology could be working flawlessly, the ISPs used by their customers frequently have congestion and service-affecting performance that cause VoIP calls to fail.

AkativeSD and iStatus FlowTracking were developed to solve these issues. AkativeSD is an inexpensive, turn-key solution which solves the problem of poorly performing ISPs by routing VoIP traffic over 4G/5G when primary connections are degraded.



Using iStatus FlowTracking, SD-WAN traffic flows can be observed. This allows you to know how your SD-WAN rules are performing using time-correlated timelines, providing uptime state information for all of your Internet connections as well as the status of RocketFailover.

# We Love Our Customers

“Our staff and guests have experienced a noticeable improvement after we implemented RocketFailover. Now, when our primary ISP is down, staff can continue to process payments and check in guests without any interruption. My favorite part is that the guests don’t even know we are having Internet issues now! Makes for a positive experience for our guests.”

– Fannie M., General Manager  
Ramada

“We put InternetAnywhere in our construction trailer, and the entire trailer became a WiFi Hotspot for everyone. Our guys love it. It’s an innovative way to solve our consumer web access problem. Now, everyone logs onto the WiFi Hotspot whenever they want to get their reports filed.”

– Brice Sloan, CEO & Owner  
Sloan Security

“We own and manage several Perkins Restaurant & Bakery locations. The RocketFailover solution provided our restaurants with an extremely reliable Internet failover solution that keeps our businesses running 24/7.”

– Andy Fellows, Director of IT  
Northcott Hospitality

“RocketFailover has saved me well into the thousands just in the past month. Thank you Akative for the unsurpassed customer service and taking a personal interest in the success of my business.”

– Joe Newlin, Owner/Operator  
The Boonedock’s

“We operate skilled nursing care facilities, and Internet connectivity is critical for our patient care. RocketFailover keeps us connected to our cloud-based electronic healthcare records system when our primary Internet service provider has an outage.”

– Christy Hofsaess, Vice President of Finance  
Hawkeye Care Centers of Iowa

“I was paying for one Verizon hotspot, not to mention the second hotspot I had to purchase for going over the “unlimited” data on the first hotspot. When I’m working in the courtroom or in the evenings for production, consuming over the data cap is common. InternetAnywhere gives me more than enough WiFi at a nominal monthly cost. The equipment was more than worth the cost of my work style and demands.”

– Reagan Evans, Court Reporter

# And Our Customers Love Us

# Join Our Valued Customers





## Built on a Foundation of Trust

“Trust is something you accumulate over a lifetime and can lose in an instant.

At Akative we promise to work hard, to do the right thing, to provide exceptional service, and to always work to earn and maintain the trust of our customers.”

– Don Van Oort, President  
Akative

[Sales@Akative.com](mailto:Sales@Akative.com)

866-950-3392

[Akative.com](https://www.Akative.com)

© 2022 Akative, a division of R & D Industries, Inc. All trademarks, service marks, trade names, trade dress, product names, and logos appearing herein are the property of their respective owners and do not constitute an endorsement. One or more products may be covered by one or more U.S. patents as set forth at [www.rdi.com/IP](http://www.rdi.com/IP). Pricing for products and services listed are subject to change without notice. Any rights not expressly granted herein are reserved. 2022-1.