



iStatus[®]

**Award-Winning Distributed,
Connectivity Management Platform**



Akative[®]



Leveraging iStatus®

Over the next decade, growth in 5G and low-power cellular options will drive a revolution in new connectivity for businesses, government, and our military. By 2027, Erickson predicts the average cell phone user in the US will be using 53 GB of monthly data, low-power cellular technologies will power entire ecosystems of new technology, and there will be nearly 9-Billion cellular connections in-use globally.

Companies such as MSPs, ISPs, ISVs, businesses, and governments want to adopt these new technologies, but managing these devices and connections will present new challenges.

By leveraging the power of iStatus®, companies can quickly solve these challenges and deploy 4G/5G solutions. Akative eliminates the pain of dealing with multiple dashboards, negotiating data pricing with national or international carriers, and trying to DIY solutions to hundreds of problems we've already solved.

iStatus has been in constant development for 8-years, and holds numerous patents. With iStatus, companies are able to quickly deploy cellular solutions with integrated monitoring, data usage tracking, signal strength information – across multiple geographic locations, networks, and customers.

iStatus is a next-generation IoT/Cloud platform that's incredibly easy to use and highly efficient. iStatus enables companies to adopt technologies quickly and use the most effective solutions, vendors, and data carriers for their specific needs. With powerful AI technology, iStatus can serve many purposes to many different types of businesses.

We welcome you to explore the power and features of iStatus and reach out to our team. Discover how you can leverage the power of iStatus, to gain a competitive advantage.



Table of Contents

- p. 4 **Akative™ + iStatus®**
Enabling Next-Generation Connectivity as a Service™ with iStatus

iStatus®

- p. 6 **iStatus®**
Connectivity Management Platform & Powerful IoT Device
- p. 12 **iStatus NPM™ (Network Performance Monitoring)**
All-in-One AI Monitoring For Your Network Health
- p. 14 **iStatus Pinpoint™**
Precise Network Connectivity Failure Detection

iStatus Security™

- p. 15 **iStatus DDLD™ (Dynamic Data Leak Detection)**
Verify Your Security Policies Are Working
- p. 16 **iStatus ChangeDetection™**
Detect Critical Network Security Changes
- p. 17 **iStatus ArpWatch™**
Easily Detect New & Rogue Devices On Your Network

iStatus Integrations & Packages

- p. 18 **iStatus® + AkativeSD™**
Integrated 4G/5G/SD-WAN – Maintaining Connectivity For Business Critical Applications
- p. 20 **iStatus® + RocketFailover®**
Leading 4G/5G Failover Internet – Say Goodbye To Internet Downtime
- p. 21 **iStatus® Packages & Pricing**
Packages Sized To Meet Your Needs



Akative™ + iStatus®

Enabling Next-Gen Connectivity as a Service™ With iStatus®

Evolving Technology

Over the past few decades, the Internet has gone from a thing that you connected to, to a thing we depend on always being available. Technology has advanced from modems to broadband, direct-fiber, 4G-LTE, 5G and now, with companies like Starlink® — worldwide high-speed Satellite connectivity.

At Akative, we focus on developing iStatus® to be the world's best connectivity management platform that enables businesses with Connectivity as a Service™. iStatus enables MSPs, ISPs, ISVs, Government, Military, and everyday businesses to quickly integrate connectivity of any type. iStatus works across thousands of customers, with hundreds of thousands of locations using a variety of hardware and data vendors while maintaining visibility to critical connectivity from the perspective of each individual location.

Empowering Businesses

Businesses host Business Critical Applications (BCAs) in the cloud. Other services such as VoIP and video conferencing demand constant connectivity. However, maintaining uninterrupted connectivity across hundreds or thousands of locations presents considerable challenges even to the most well-organized businesses.

iStatus takes a unique approach to solve these problems, empowering businesses to implement any form of primary data connectivity combined with low-cost backup connectivity. It also simultaneously adds critical visibility for the businesses, agencies, MSPs, ISPs, or ISVs who implement iStatus.

Manage & Monitor What Matters Most to Your Business

iStatus brings powerful tools to monitor critical devices and cloud services and also provides essential tools that enable businesses to know what devices are on the network and to detect low-level network attacks.



Essential data connectivity monitoring so that businesses know that outlying locations are online.



Proactive testing of backup data connections utilizing patented ConnectionValidation™ technology.



Intelligent AI & ML based alerts provide insight into network operation and bring network information down to a point where managers and other key stakeholders also have visibility.



Network Performance Monitoring, so that businesses know that cloud hosted apps are available across all locations using patented CongestionDetection™.



Security monitoring so that businesses can detect rogue devices or other critical security changes.



iStatus Pinpoint™ to detect the precise point of connection failure and remedy a solution to conserve on costly troubleshooting.



Data usage monitoring across multiple locations, multiple devices, and multiple data carriers.

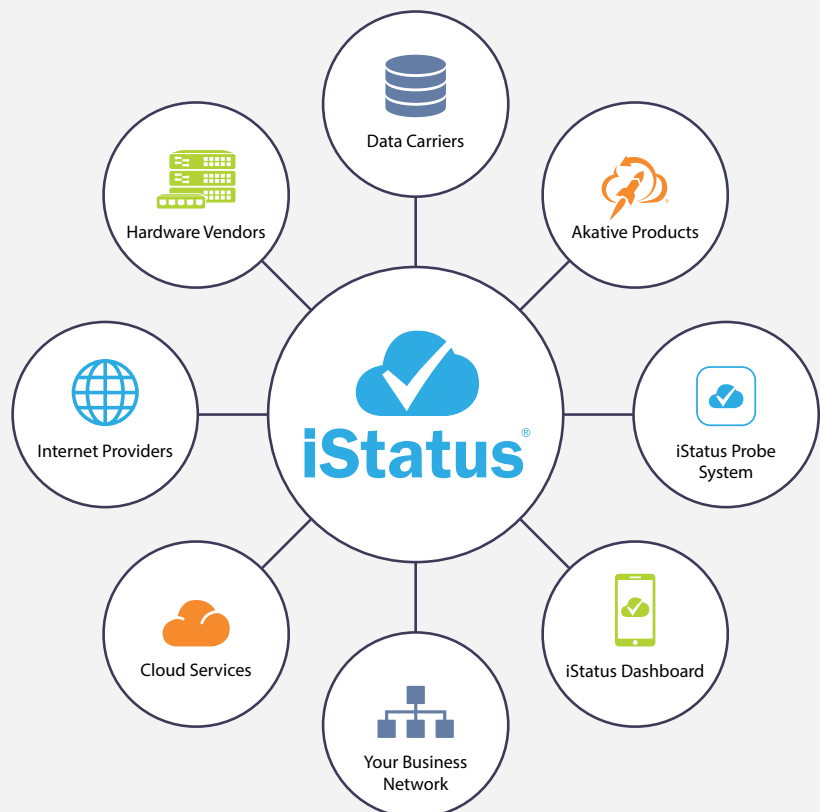


Patented SD-WAN FlowTracking™ enables businesses to monitor SD-WAN traffic flows across hundreds or thousands of locations.

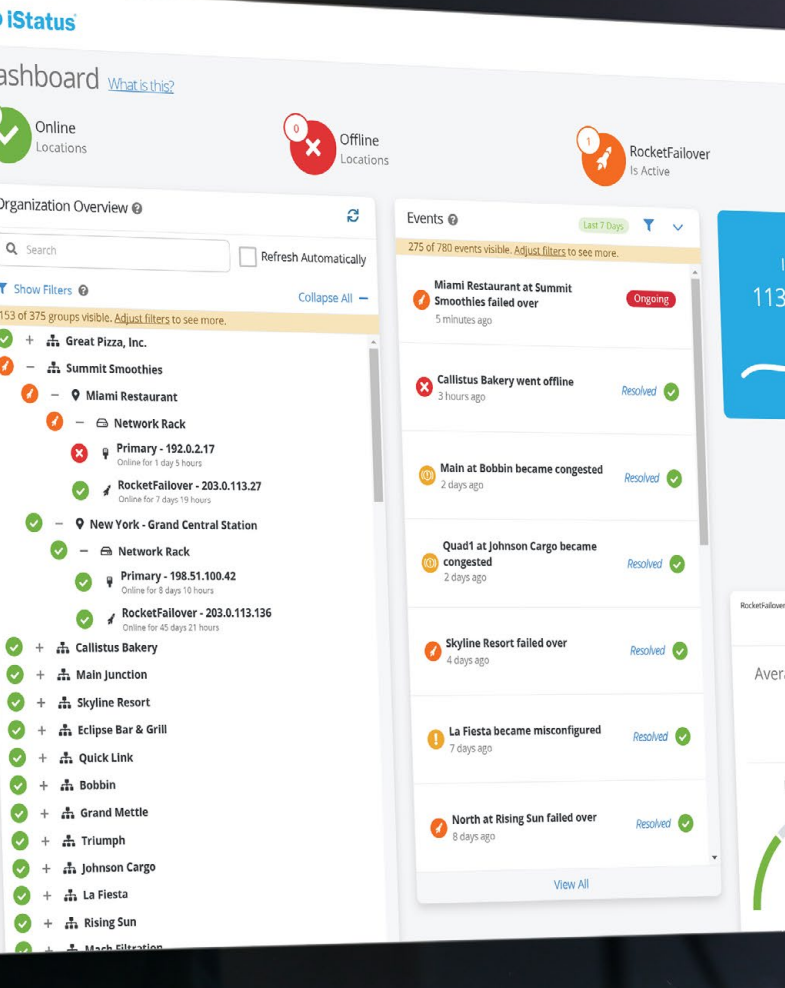
Integrating Connectivity

iStatus acts as an essential glue-layer for companies as they seek to integrate many forms of connectivity, from different broadband, cellular, and satellite vendors. In addition, iStatus provides an essential layer of visibility across multiple businesses, locations, data carriers, hardware, and networks.

This integration and diverse visibility paired together into a single platform, revolutionizes the way businesses manage their network and connectivity.



Read more about iStatus features and capabilities on page 10.



iStatus®

Connectivity Management Platform & Powerful IoT Device

IT Doesn't Have To Be Complicated

Monitoring and managing the connectivity of your business is easier than ever — no more weeding through complex data to figure out network problems. iStatus enables you to view the status of your Internet connections, monitor your data usage, and improve performance for business critical applications in a single pane of glass.

Outperforming Costly Traditional Monitoring

iStatus is a low-cost IoT-based network monitoring solution that outperforms other monitoring methods. A typical solution will cost you upwards of \$1,500 for a PC, UPS, monitoring software, and labor needed per location — that's \$1,500 per location! iStatus uses low-cost hardware probes, enabling you to be set up within 5 minutes, and only costs \$99.95 per probe.

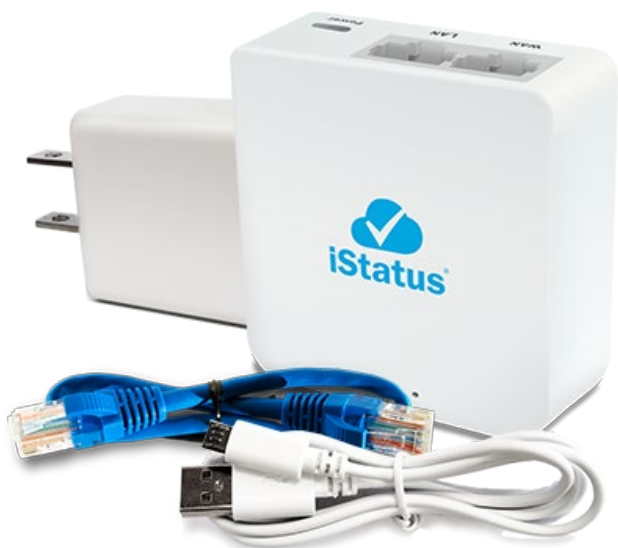
With easy to understand network insight and the ability to monitor multiple locations, iStatus effortlessly outperforms typical solutions at a fraction of the cost. iStatus is also maintenance free — Akative maintains the platform for you so you can focus on improving your network.

Top Benefits of Using The IoT iStatus Probe For Edge Networks

We've seen many businesses move fully to the cloud while others are in hybrid-cloud models where portions of their workloads are in the cloud and portions are in legacy on-prem systems. This is driving an increasingly complicated infrastructure and IT teams need to be responsive to provide robust connectivity at the edge.

iStatus addresses these challenges head-on by enabling edge network monitoring with a low-cost, IoT-based, hardware probe and the best platform for that visibility.

Customers seeking to capitalize on these market trend opportunities continue to turn to iStatus as the platform of choice for scalable Connectivity as a Service.



Compact, Low-Energy, IoT iStatus Probe Hardware

Deployment & Maintenance Advantages

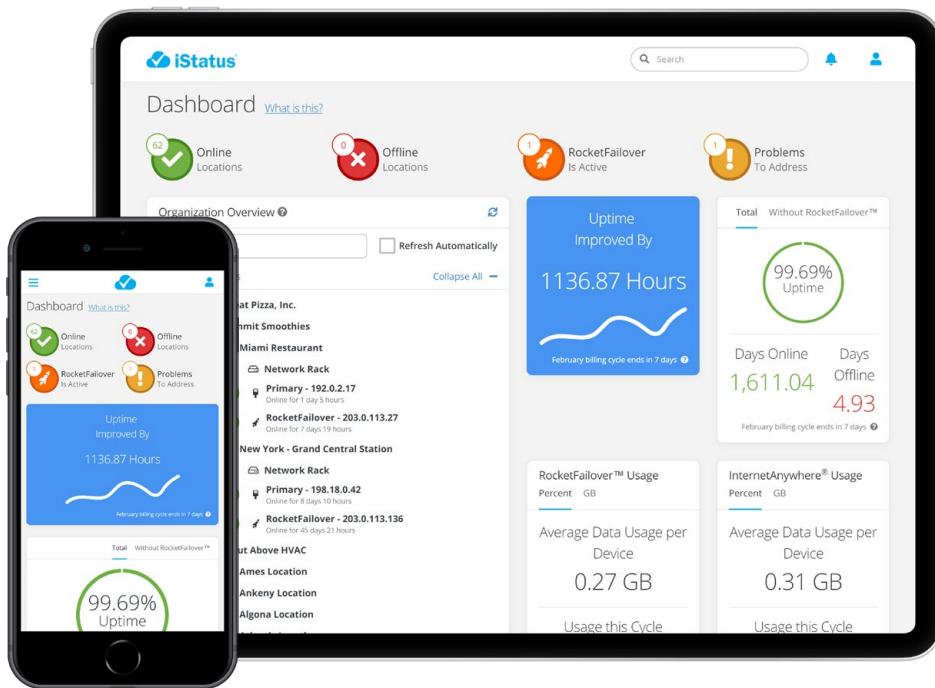
- iStatus probes are network hardware agnostic and integrates with any network equipment
- Works in networks with heterogeneous devices/vendors
- Monitor WAN health and connectivity
- iStatus probes can be deployed as IoT sensors on multiple VLANs
- Preconfigured hardware allows for easy plug-and-play out of box experience that works on any network
- Easy to deploy across many locations/networks without extensive IT knowledge
- Zero-configuration templates enable businesses of all sizes to utilize the iStatus management/monitoring services
- Monitor as a LAN client to ensure routing and firewall rules are effective

Cost Advantages

- Pinpoint network issues and reduce total cost of ownership while improving recovery time
- Fully managed with updates to software and firmware — zero labor cost on your end
- Eliminate server and OS management for network monitoring; erase all associated security and patch management costs
- Extremely reliable, using a fanless design — providing more stable life-cycle management and device longevity
- Environmentally friendly - low energy usage, minimal CapEx, and efficient hardware footprint for a cost-effective replacement

Security Advantages

- Run iStatus as a standalone IoT security product to detect new devices, detect DNS/gateway changes, and detect data leaks
- Small security footprint IoT device; our probe doesn't run a web server and only initiates outbound traffic which makes it hard to compromise
- Highly secure with no open ports or services



Dashboard

Ideal for complex, multi-location networks and companies that rely on cloud services, the iStatus Dashboard gives you a birds-eye view of all remote location Internet connections in real-time. Simple 'online,' 'offline,' 'RocketFailover,' and 'issue' icons indicate the ConnectionStatus™ of locations and allow you to view primary and backup connections. iStatus helps quickly identify which locations require attention for essential business continuity.

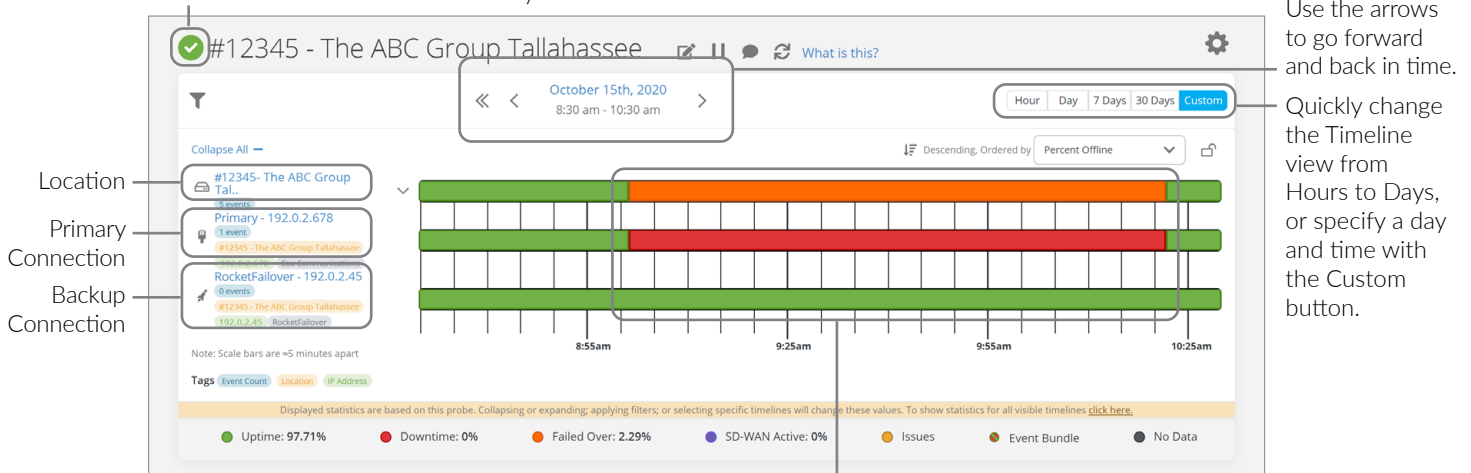
Historical Reporting

iStatus reporting allows insight to be correlated across locations — allowing executives and operation teams to understand if network issues are caused by users, IoT devices, or other critical systems.

iStatus Timeline View

The Timeline view enables you to see the connectivity status at your locations in different time increments.

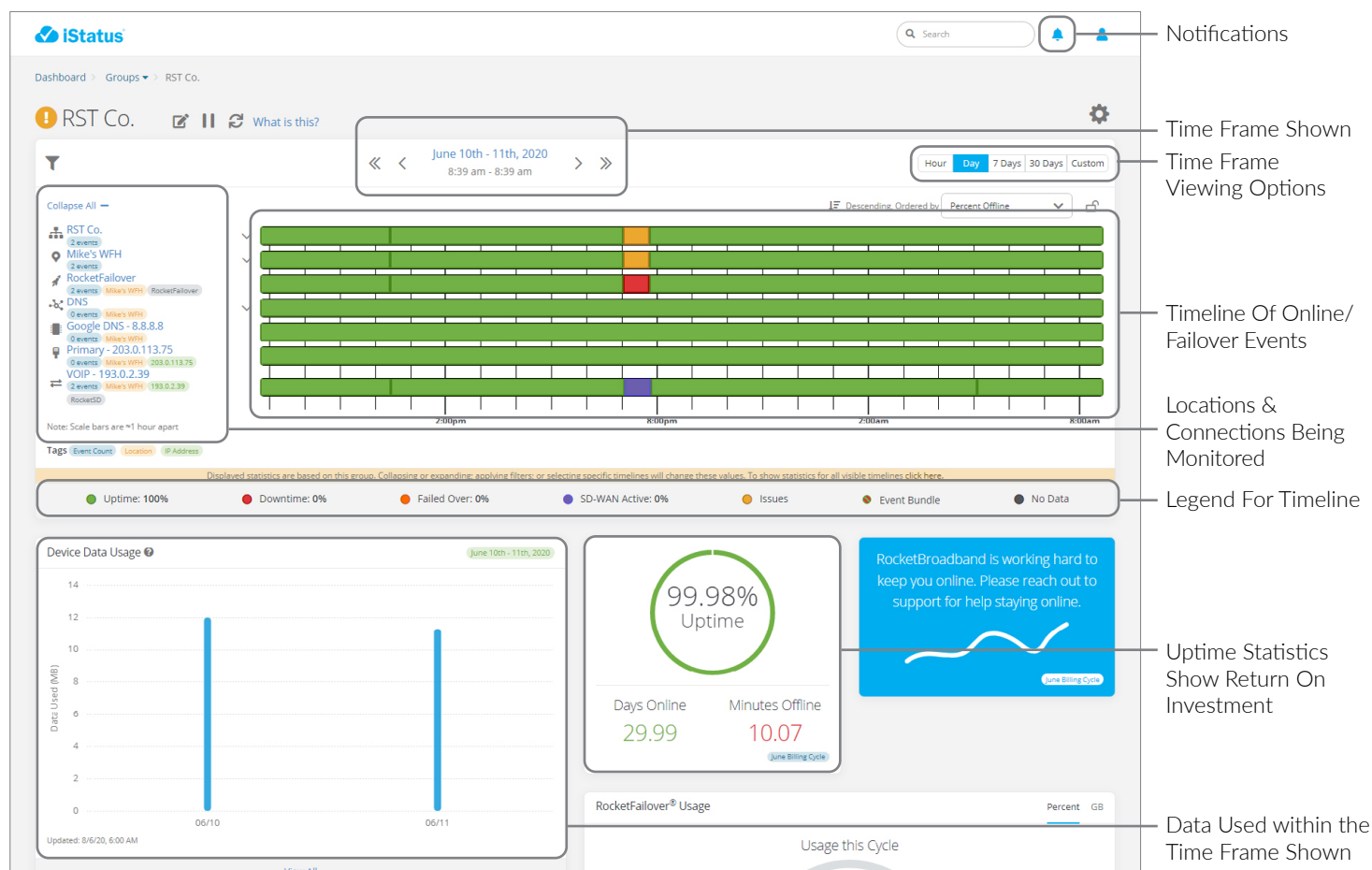
Indicates the current status (Online, Offline, Failover, or Issues) of your Location. In this case the location is in currently Online.



Colors shown on the timeline indicate the state of your location and connections. In this case, the Primary Connection went Offline (Red) from 9-10:20 am while the Backup Connection remained Online (Green). This caused the Location to be in Failover (Orange), until the Primary Connection was restored.

ConnectionValidation™

ConnectionValidation is a patented iStatus technology that allows continuous testing and validating of backup connections to ensure our AlwaysOn 4G™ can meet your business needs. With peace of mind verification, ConnectionValidation ensures that in the event of an ISP Internet outage, your business operations remain seamless with your backup connection.



iStatus Features Patented Technology Allowing It To:



Monitor Internet Connectivity

iStatus monitors connectivity and generates alerts when connections fail



Monitor VPN's & Critical Cloud Services

VPN's, cloud services, network services can all be monitored by iStatus



Enable The IT Team To Quickly Determine The Source Of Problems

Quickly recognize and resolve issues with iStatus

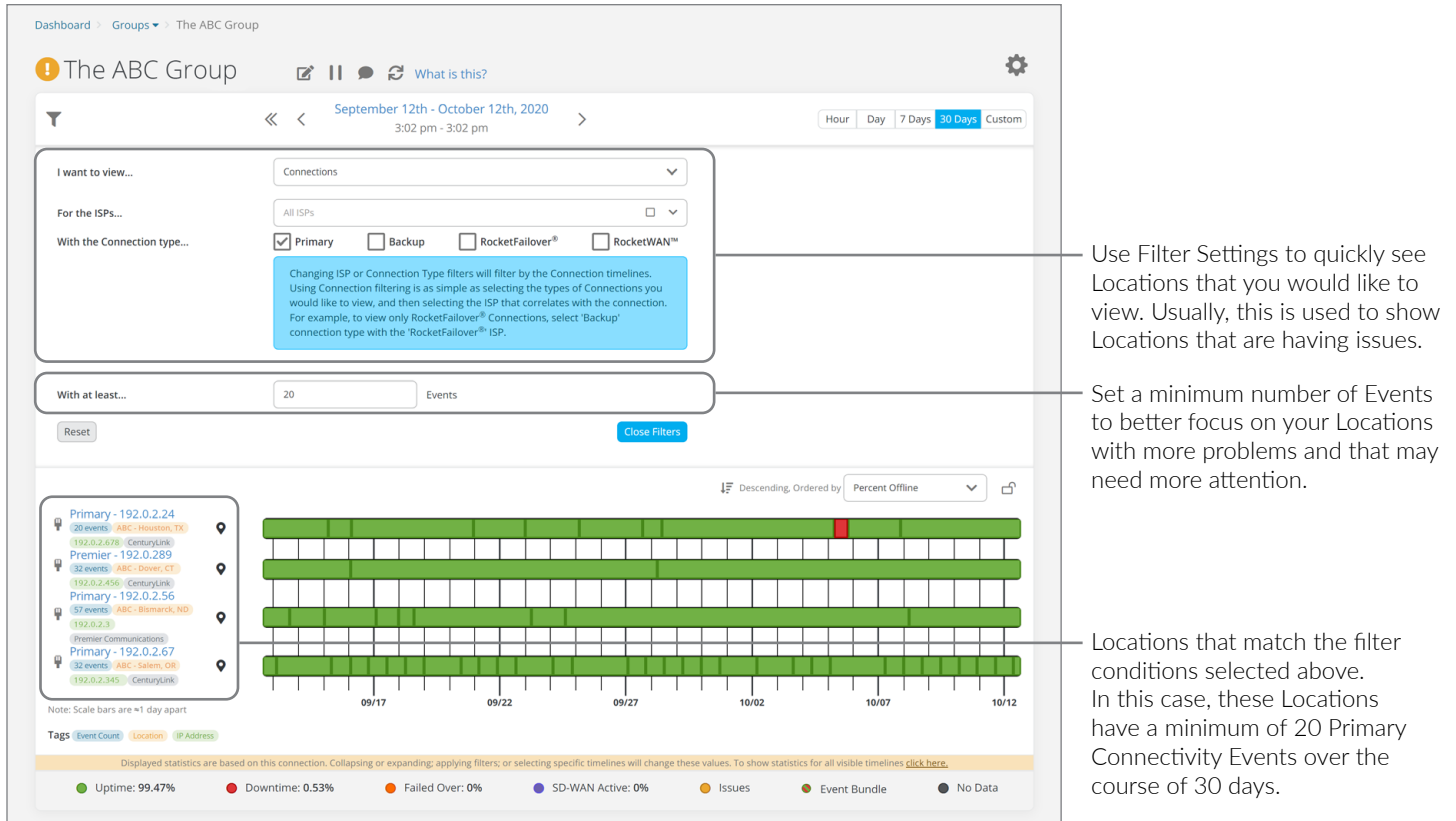


Provide Alerts To Users & Your IT Team

iStatus IntelligentAlerts™ reduce costs and help users stay productive

View All Your Locations In One Convenient Screen

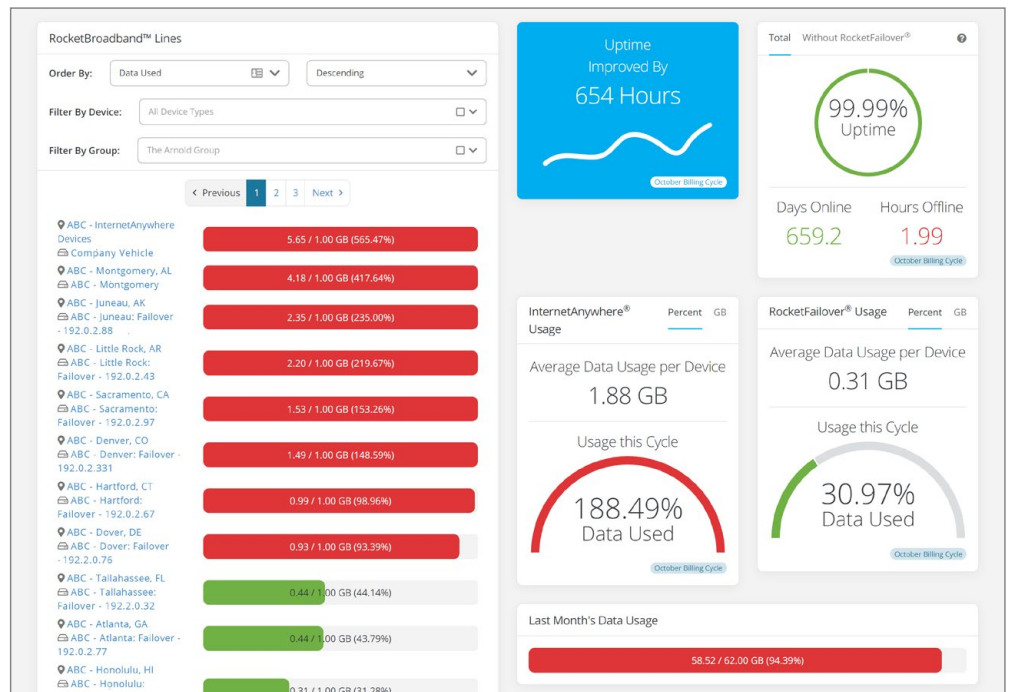
iStatus timeline view displays all your locations at once. With the filtering feature, you can sort locations that have the most events or require the most attention to the top for proactive management.



Monitor Your Data Usage

See your locations' data usage to understand which locations are consuming the most data during the month. Management can examine data usage to understand which locations are problematic and if further solutions are required such as an ISP change.

Although data consumption can vary, our solutions are still preventing Internet downtime.





Immediate, Real-Time Insight & Alerts

With a simple left swipe to view widgets, iStatus provides a 5-second overview of your network connectivity without the hassle of logging into another dashboard. Quickly navigate to our most-used features with iStatus Home Screen Menu via Apple iOS 3D Touch feature.

IntelligentAlerts™

iStatus unites IT professionals, and business staff with simple network alerts. When any connectivity issue is detected, iStatus sends IntelligentAlerts™ via push notifications and/or email. IntelligentAlerts include pertinent, understandable information to eliminate guesswork and help you quickly resolve the issue.

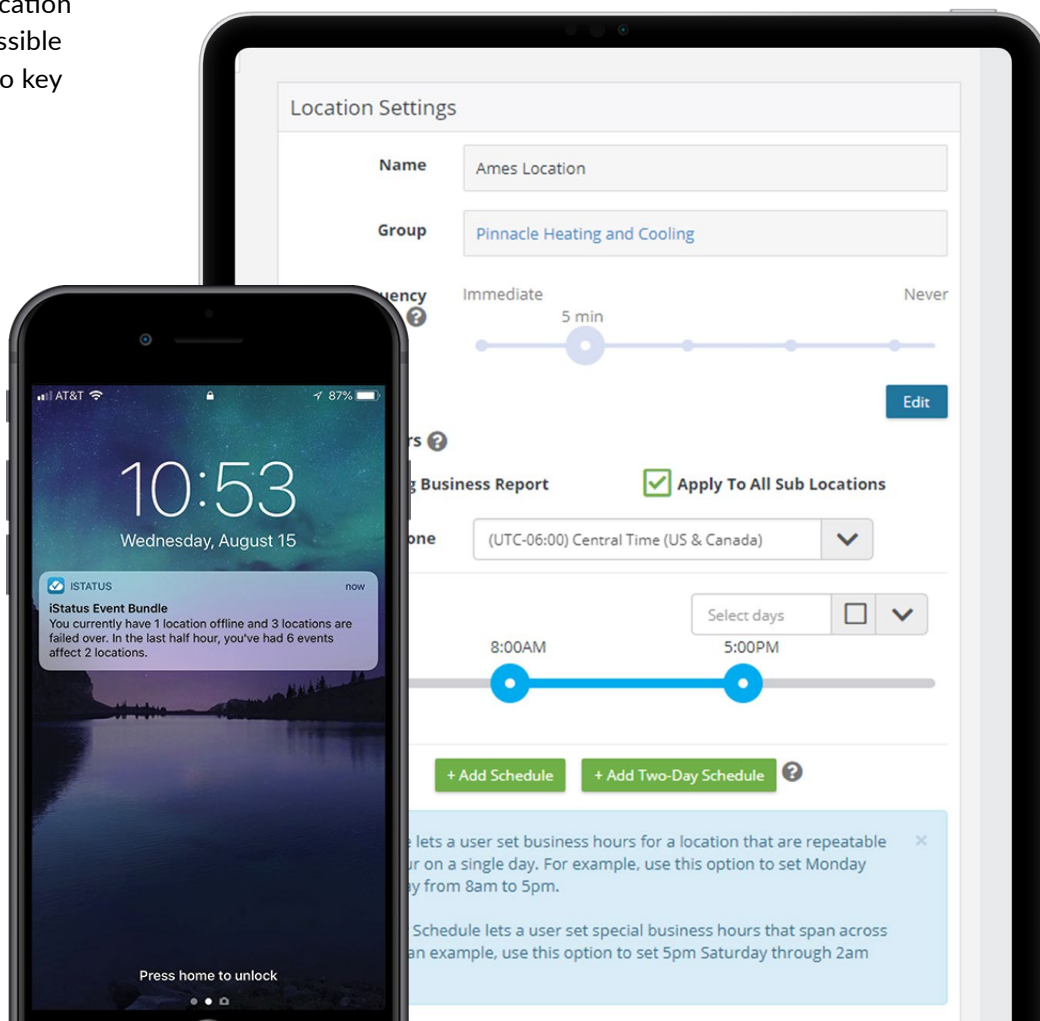
iStatus uses bulk notifications to reduce inbox overload caused by traditional monitoring methods. IntelligentAlerts™ makes multi-location network management more accessible and delivers critical information to key stakeholders.

Business Hours Intelligence

Unlike traditional platforms that send hundreds of alerts overnight, iStatus bundles your alerts so you have the critical information to solve issues an hour before your business opens. This further reduces the number of alerts you receive depending on the threshold you set for your Business Hours feature. With this feature, you set notifications for a specific window of time, and it bundles IntelligentAlerts from overnight data into one convenient email.

Multi-Carrier Data Pooling

iStatus enables data pooling – allowing you to share data among locations and manage data usage on the dashboard. iStatus monitors 4G/5G data from both Verizon and AT&T. With multi-carrier monitoring and multi-location data pooling, iStatus is one of the only carrier-agnostic monitoring platforms. This enables businesses to share data among locations, even if there are different carriers for those locations.



iStatus NPM™ (Network Performance Monitoring)

All-in-One AI Monitoring For Your Network Health

Monitor Your Entire IT Infrastructure At Massive Savings

Business networks today have become increasingly complex and support countless operations and network-connected devices. Monitoring all of these aspects is logistically challenging, expensive, and requires around-the-clock monitoring.

iStatus NPM (Network Performance Monitoring) solves these management challenges with revolutionary AI technology to monitor additional network targets. iStatus NPM provides valuable and coveted insight about business critical applications. This allows management to solve issues with daily operations or customer-facing transactions can be resolved quickly and efficiently.

What's more, iStatus NPM delivers massive savings because it requires no additional hardware to monitor business-critical network targets. iStatus NPM is included in iStatus Professional and Enterprise plans, or can be added on to the iStatus Essentials and Legacy plans.

Endless Monitoring Possibilities

With the ability to monitor up to 20 targets per probe, iStatus NPM can monitor various applications, devices, and protocols on your LAN and WAN network. In fact, iStatus NPM acts as an application performance monitoring device by measuring the performance of web applications, services, APIs, and infrastructure from the vantage point of an end-user.

NPM provides monitoring versatility that can now detect performance issues or outages for WAN applications such as Point of Sale/payment processing systems. At the same time, NPM can monitor critical LAN equipment like servers, switches, NAS, or firewalls for device failures.



Improve Your Network Health By Monitoring



Key Cloud Applications



Internet Congestion



Bandwidth Sufficiency



Key Local Resources



Internet Connectivity



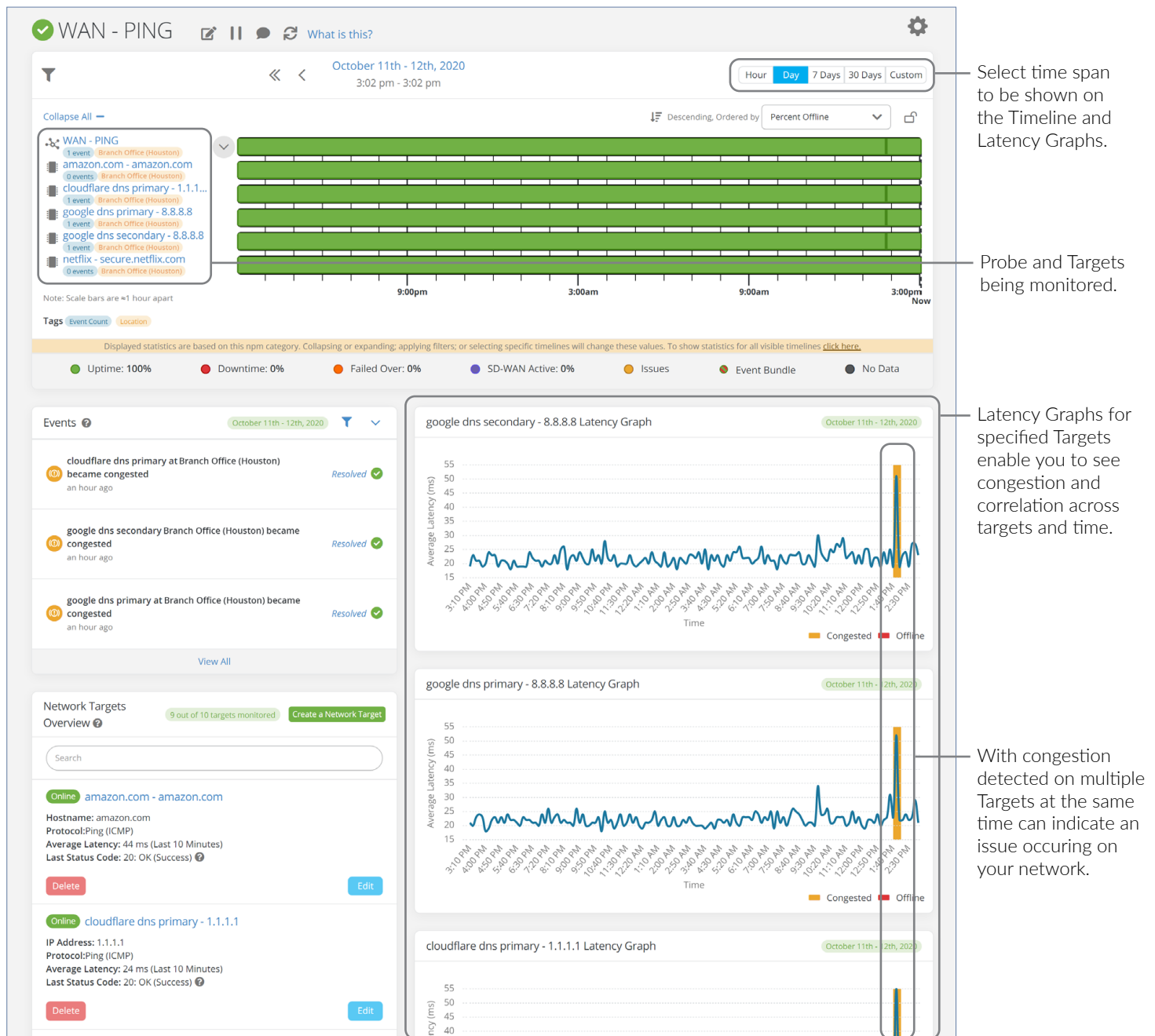
Network Protocols

Latency Graphs

Easily see how well your connections are performing with NPM's Latency Graphs. With every network target monitored by a probe, iStatus displays all of your data on a single screen. This allows you to quickly and effortlessly compare your network targets to determine if the issues lie within your network or outside of it.

CongestionMonitoring™

iStatus NPM provides Web App Performance Monitoring/ Web App Health Monitoring by tracking intermittent and sustained network congestion issues that weren't previously observable by IT staff. iStatus NPM detects congestion issues and sends an alert to help identify where the problem is, what may be causing it, and apply a solution.

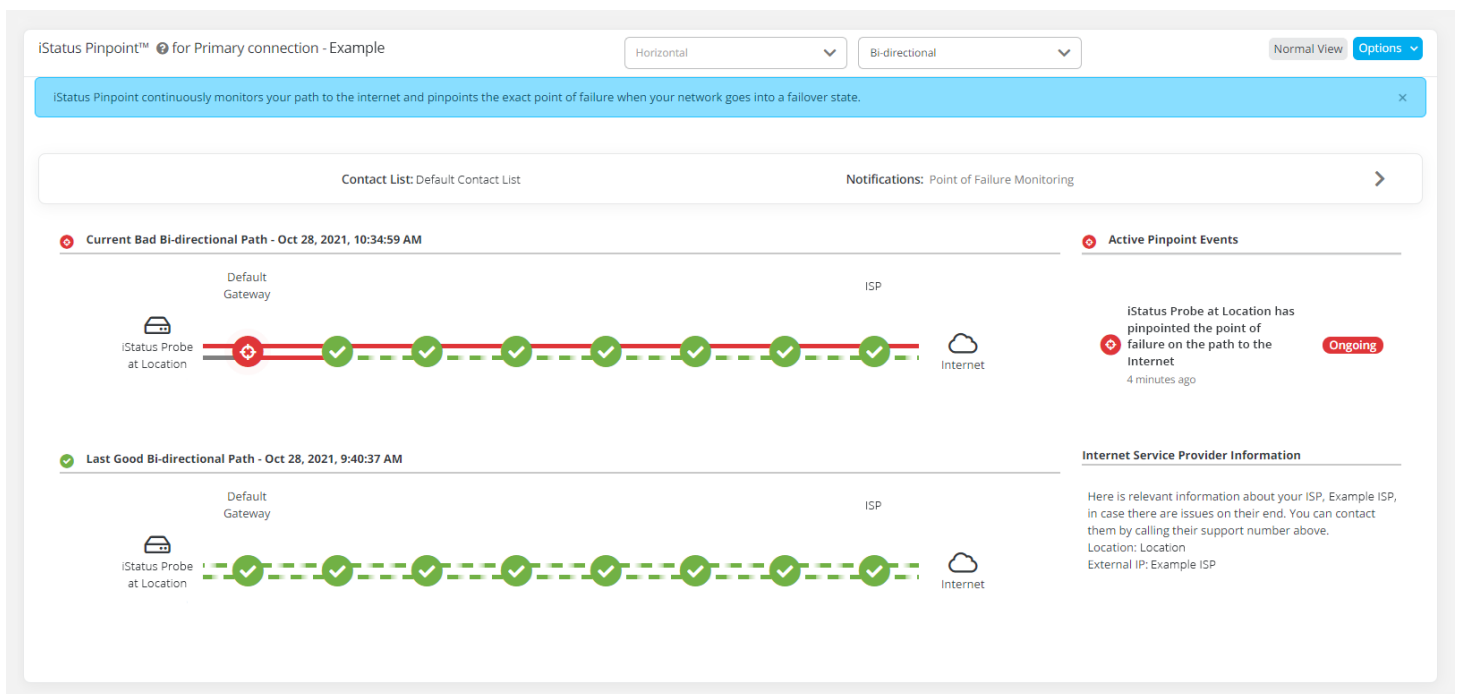


iStatus Pinpoint™

Precise Network Failure Detection & Remedy

iStatus Pinpoint further utilizes the AI-powered functions of iStatus to monitor and detect which portions of network segments are experiencing a network-interrupting connection failure. Pinpoint dramatically reduces downtime and troubleshooting time by automatically discovering the root cause of the network connectivity failure.

Pinpoint monitors the Internet paths coming to and from your network 24/7. In the event that an outage occurs that will impact business operations, Pinpoint prevents the need for costly IT diagnostics and reduces labor costs through automation (even on weekends and holidays). With Pinpoint, your business doesn't need to dispatch a technician to the site in order to troubleshoot the connectivity issue.



Pinpoint monitors your connections to & from the Internet to identify the exact point of failure. In the examples above, the top bi-directional path is experiencing an interruption. This creates an ongoing iStatus event that tells you where the issue is so you can quickly resolve it. The bottom bi-directional path shows a healthy connection to and from the Internet.



Eliminates lengthy troubleshooting, and saves a lot of IT resources, time, frustration, and expenses.



Autonomously monitors the path to the Internet and pinpoints the exact cause of your lost connectivity.



Get solutions based on the identified cause to best resolve the issue and restore connectivity.

iStatus DDLD™ (Dynamic Data Leak Detection)

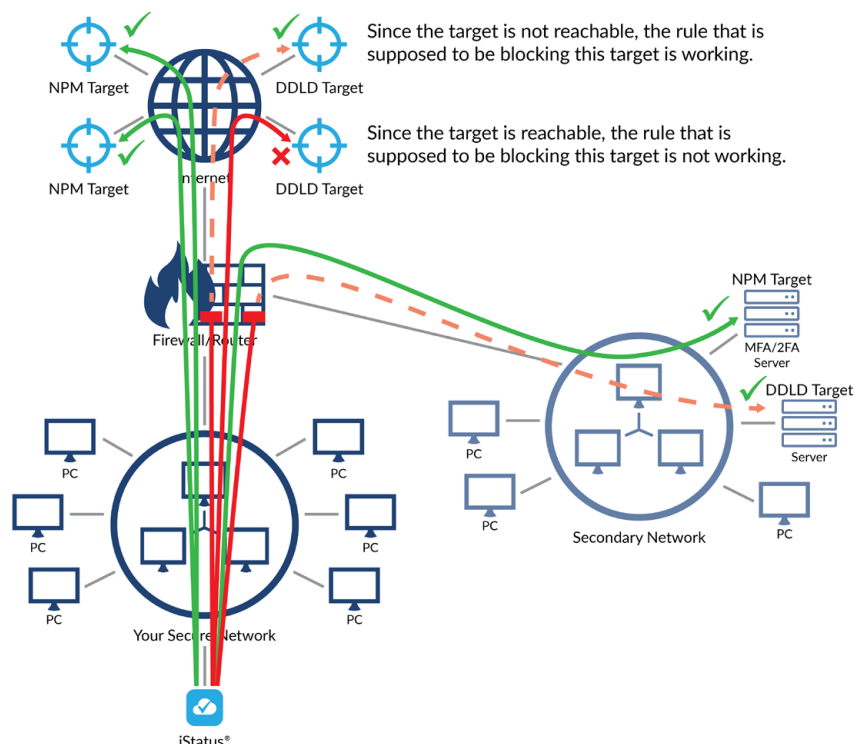
Verify Your Security Policies Are Working

In modern networks, VLANs (virtual networks) are used to segment traffic. The problem is that IT teams can't be physically present across dozens or hundreds of locations, so users may connect devices to the wrong network segments, interconnect VLANs, or a hacker could change security policies without being noticed.

iStatus DDLD Helps Detect Security Policy Errors Or Changes

Detect when devices on your network can access things they should not be able to access – iStatus DDLD™ (Dynamic Data Leak Detection) allows you to set up rules that are tested by the iStatus probe. For example, if you have a secure PCI network, you may have cash registers that are allowed to communicate with Point-of-Sale servers, but you configure those networks so that devices on the secure network cannot communicate with Google or Facebook.

With DDLD, you can quickly set up targets that are tested 24/7 to ensure that these communications are always blocked. DDLD targets can be computers on a LAN, VPN, or targets on the Internet, including HTTP traffic. If DDLD is able to access a network target, a DDLD (data leak) event is generated, logged, and an alert is sent to you via email.



Quickly Enhance Network Security

- Detect when filtering on a WAN connection for a LAN/ VLAN is not working or is misconfigured.
- Detect malicious and advanced time-based attacks in instances where network infrastructure is compromised but only appears so for specific times or days.
- Establish a baseline to know what devices are normally on your network, what DNS servers are in-use and document other key security metrics such as the gateway MAC address.
- Detect when VLAN to VLAN traffic firewall rules are not working or are misconfigured.
- Effortlessly document your network and manage key security information across multiple locations and evolve that documentation to automatically remain current and relevant.
- Built-in audit trail helps you manage network security with multiple users and know who did what and when they did it.

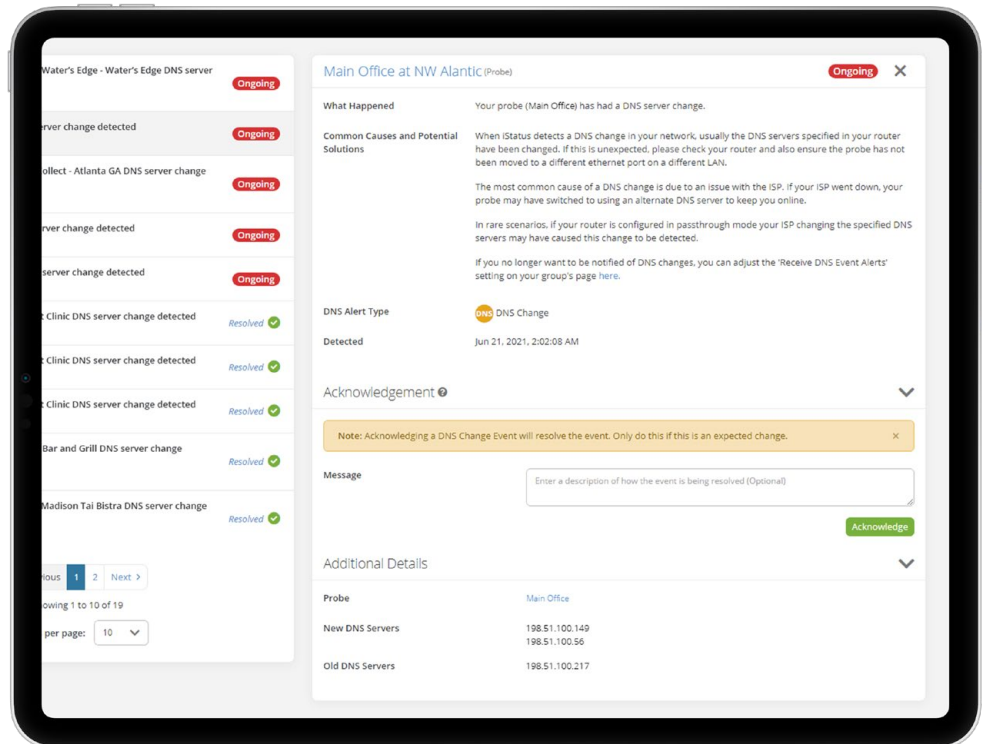
iStatus ChangeDetection™

Detect Critical Network Security Changes

React Proactively & Keep Your Network Secure

Maintain the security of your network with iStatus ChangeDetection. iStatus establishes a network baseline and automatically documents critical network attributes such as the DNS servers that are in use, the MAC address of the default gateway, and the IP addresses of servers and other network devices.

iStatus then monitors your network 24/7 and alerts you when it detects a critical network security change, such as an alteration to the DNS, indicating a misconfiguration, or worse, a possible cyber attack.



iStatus Events inform you what happened, when, and what are the likely causes.

Detect Critical Gateway Security Changes

All the devices on a network segment send data to the default gateway, which in turn forwards that traffic to other servers or to the Internet. When hackers gain access to secure networks, they frequently launch a MIM (Man-in-the-Middle) attack where the hacker masquerades as the default gateway. Instead, ChangeDetection alerts you when it notices changes to your gateway to help you thwart MIM style attacks.

Detect Critical DNS Security Changes

Changes in DNS servers can be an indication of DNS hijacking, which hackers use to redirect unsuspecting users to servers that act as normal servers, but instead are designed to harvest credentials. In turn, hackers can then leverage those credentials to attack. Instead, ChangeDetection also alerts when it notices changes to your DNS. DNS changes could mean a possible misconfiguration or an attack, so iStatus suggests the appropriate actions to take.



Identify Misconfigurations



Halt Possible Cyberattacks



Maintain Your Network Security

iStatus ArpWatch™

Easily Detect New & Rogue Devices On Your Network

Challenges Of Protecting Your Network From Rogue Devices

Even with network security in place, it is difficult to notice new devices accessing your company's network, especially if you have an extensive network or one with many segments. With multiple attack points, a rogue or compromised device can easily slip through – which can result in data and financial loss.

Existing device detection solutions, such as a Network Access Control (NAC) system or an Intrusion Detection Solution (IDS), on average, require a six-digit budget. In addition to the high cost, these solutions are often difficult to manage over long periods of time. Akative aims to address these limitations head-on and deliver critical security technology with iStatus ArpWatch.

How It Works

Once the iStatus monitoring probe is installed, and ArpWatch is enabled, ArpWatch begins to proactively monitor for devices that appear on your network. Any devices detected within the defined initial discovery interval (default set at 48 hours) are automatically approved.

After this interval, ArpWatch immediately sends an alert to your network administrator when it detects a new device or discovers a known device was altered (such as its IP address was changed). This enables your network administrator to know device activity in real-time and validate it or halt it – protecting your network from unsafe, rogue devices and compromising activity.

iStatus ArpWatch™ Network Security Monitoring

Last Updated: Oct 12, 2020, 3:11:54 PM Options

Contact List: Branch Office Security Settings: Medium Monitoring: Gateway Changes, New Devices

Contact List: Ames People

Monitoring Types: Monitor Gateway Changes, Watch For New Devices

Security Settings: Low Medium High

Enable Learning Period: 1 Hours 2 Hours 4 Hours 24 Hours 3 Days Disabled

Cancel Submit

Search for devices + Add New Device Mark All As Known Export Devices as CSV

CONNECTIVITY	IP ADDRESS (HOSTNAME)	DEVICE NAME	MAC ADDRESS	DEVICE VENDOR	LAST SEEN	STATUS
●	192.0.2.41 Default Gateway	(Set Device Name)	00:00:5e:00:53:0a	WatchGuard Technologies, Inc.	10/12/20, 3:11 PM	Known
●	192.0.2.10 This Probe	Thinix Ames Office	00:00:5e:00:53:ab	iStatus®	10/12/20, 3:11 PM	Known
●	192.0.2.50	(Set Device Name)	00:00:5e:00:53:5f	G-PRO COMPUTER	10/12/20, 3:11 PM	New
●	192.0.2.53	(Set Device Name)	00:00:5e:00:53:37	Motorola Mobility LLC, a Lenovo Company	10/12/20, 3:11 PM	New
●	192.0.2.44	(Set Device Name)	00:00:5e:00:53:cf	IEEE Registration Authority	10/12/20, 3:11 PM	Known
●	192.0.2.45	(Set Device Name)	00:00:5e:00:53:2d	Panasonic Communications Co., Ltd.	10/12/20, 3:11 PM	Known
●	192.0.2.46	(Set Device Name)	00:00:5e:00:53:18	IEEE Registration Authority	10/12/20, 3:11 PM	Known
●	192.0.2.47	(Set Device Name)	00:00:5e:00:53:17	Panasonic Communications Co., Ltd.	10/12/20, 3:11 PM	New
●	192.0.2.48	(Set Device Name)	00:00:5e:00:53:5d	Panasonic Communications Co., Ltd.	10/12/20, 3:11 PM	Known

Indicates the Learning Period state.

Set your security level.

Enabled the Learning Period for your network to pull in known and trusted devices before alerts are sent for newly detected devices and IP changes.

New devices are detected on your network in real-time.



Integrated Solution
Simplifying SD-WAN
Deployments



Fast, Reliable
Performance For VoIP
& BCAs



Integrated iStatus
Monitoring &
IntelligentAlerts



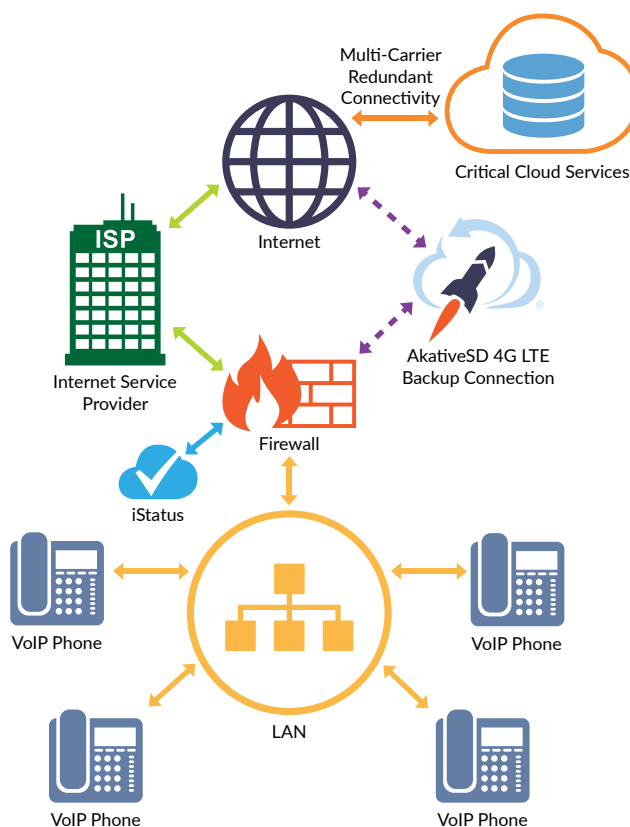
Fully Managed To Save
You Money & Allow You To
Focus Elsewhere

iStatus® + AkativeSD™

Integrated 4G/5G/SD-WAN – Maintaining Connectivity For Business-Critical Applications

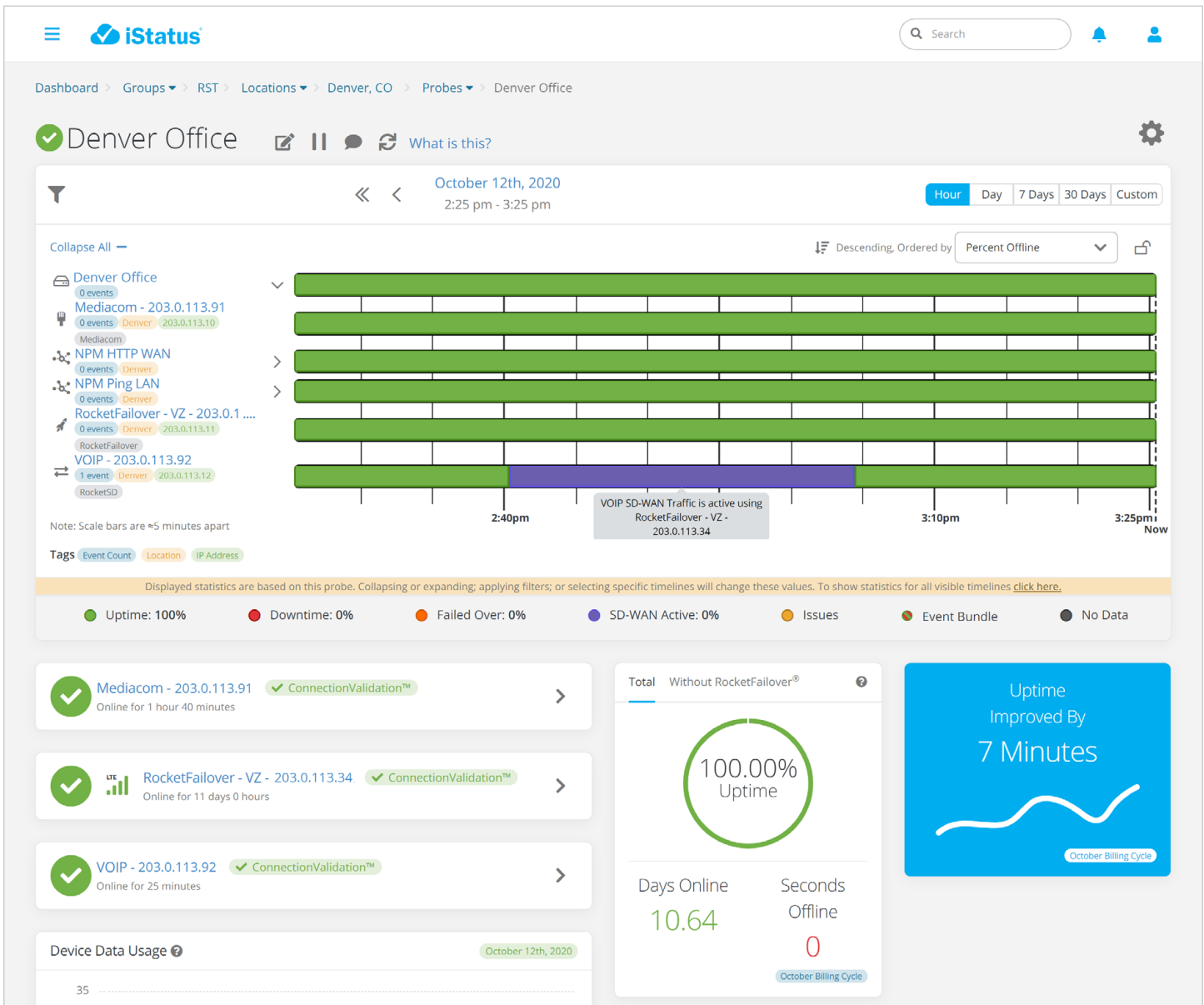
Businesses today rely on business critical applications that simply cannot be down. However, businesses are at the mercy of their ISP when it comes to reliable and stable connectivity.

AkativeSD™ combines an enterprise-class SD-WAN firewall, backup connectivity, iStatus monitoring, and alerts, with iStatus FlowTracking™ to overcome ISP issues. AkativeSD is a fully managed solution with SD-WAN-based firewall configurations to enable portions of your network traffic to be rerouted to a backup connection. When networks become congested or experience latency, AkativeSD can move business-critical applications to the backup connection, so you don't experience network issues.



AkativeSD For VoIP & Video Conferencing

AkativeSD allows your firewall to steer traffic to use the best connection available. Your net benefit is improved connectivity performance and quality for your business-critical applications.



iStatus FlowTracking™ — Traffic Flow Monitoring For SD-WAN Implementations

AkativeSD and iStatus FlowTracking were developed to solve issues such as congestion and latency. AkativeSD is an inexpensive, turn-key solution that solves the problem of poorly performing ISPs by routing critical business traffic (such as VoIP) over 4G when primary connections are degraded.

Using iStatus FlowTracking, SD-WAN traffic flows can be observed. This allows you to know how your SD-WAN rules are performing using time-correlated timelines, providing uptime information for all of your Internet connections as well as the status of RocketFailover connections.



iStatus® + RocketFailover®

Leading 4G/5G Failover Internet — Say Goodbye To Internet Downtime

What Internet Downtime Costs

Over half of companies report millions of dollars in lost revenue annually due to Internet outages. Lost customers, halted business transactions, and loss of employee productivity are among many negative results caused by Internet outages.

RocketFailover has successfully mitigated these effects by providing 4G/5G backup Internet connections to keep businesses online 24/7.

Keep Your Business Up, Even When The Internet Goes Down

Akative has pioneered technology to provide automatic connection failover for businesses of all sizes. As a result, RocketFailover is one of the world's leading backup Internet solutions. RocketFailover is a complete, easy-to-install solution that provides a secondary Internet connection with automatic connection failover, 4G/5G LTE data service, hardware, and iStatus connection monitoring.



By integrating with iStatus, you can easily monitor your connections 24/7 on your smartphone. When combined, iStatus and RocketFailover saves your business valuable time and money that would have been lost to connection issues.



iStatus® Packages & Pricing

Good For Small Businesses	★ Most Popular ★	Ideal For Enterprises
Essentials Plan \$14.95/Month	Professional Plan \$19.95/Month	Enterprise+ Plan \$29.95/Month
Service & Support: <ul style="list-style-type: none"> • Live-In-Five™ remote install assistance • Remote equipment support/updates & warranty • Phone/email support - Mon.-Fri., 8am-5pm CST iStatus® Monitoring & Alerts: <ul style="list-style-type: none"> • Data usage alerts via email, web, & apps • Multi-site data usage & uptime tracking • IntelligentAlerts™ with Business Hours • ConnectionValidation™ • iStatus Signal-IQ™ - Monitor signal strength • StickyFailover Detection™ - detect when traffic is stuck on the failover connection • iStatus NPM™ - Monitor 1 NPM target 	<ul style="list-style-type: none"> • Everything in Essentials plus: iStatus Security™: <ul style="list-style-type: none"> • iStatus ChangeDetection™ • iStatus ArpWatch™ & ArpWatch Reporting • iStatus DDLD™ iStatus® Monitoring: <ul style="list-style-type: none"> • iStatus Pinpoint™ • Monitor any combination of NPM & DDLD targets up to a total of 10 targets iStatus® Reports & Settings: <ul style="list-style-type: none"> • Location level on-demand & recurring reports • Deployment Templates - Default settings for new targets, locations, & probes throughout your group or whole organization • 3-Months of audit logs with historical data 	<ul style="list-style-type: none"> • Everything in Professional plus: iStatus® Monitoring & Reports: <ul style="list-style-type: none"> • Monitor any combination of NPM & DDLD targets up to a total of 20 targets • iStatus FlowTracking™ (SD-WAN firewall configurations sold separately) • Increase to 12-Months of audit logs with historical data • Advanced NPM Reporting - location-specific or multi-location on-demand & recurring reports • iStatus Internet Health Report - compare business critical application performance & Internet connectivity across locations • Network Security Compliance Reporting for PCI, HIPAA, SOX, & more (coming soon)

Note: All iStatus packages require an iStatus Probe (\$99.95 upfront cost)

Bundle & Save!

Essentials	Professional	Enterprise+
<ul style="list-style-type: none"> • 1 Year Subscription: \$150 • 3 Year Subscription: \$300 • 5 Year Subscription: \$450 	<ul style="list-style-type: none"> • 1 Year Subscription: \$200 • 3 Year Subscription: \$400 • 5 Year Subscription: \$600 	<ul style="list-style-type: none"> • 1 Year Subscription: \$300 • 3 Year Subscription: \$600 • 5 Year Subscription: \$900

We Love Our Customers

"Our staff and guests have experienced a noticeable improvement after we implemented RocketFailover. Now, when our primary ISP is down, staff can continue to process payments and check in guests without any interruption. My favorite part is that the guests don't even know we are having Internet issues now! Makes for a positive experience for our guests."

— Fannie M., General Manager
Ramada

"We put InternetAnywhere in our construction trailer, and the entire trailer became a WiFi Hotspot for everyone. Our guys love it. It's an innovative way to solve our consumer web access problem. Now, everyone logs onto the WiFi Hotspot whenever they want to get their reports filed."

— Brice Sloan, CEO & Owner
Sloan Security

"Using the RocketFailover solution to ensure Internet connectivity was and continues to be the solution. The Akative team supports us well, and they do what they say."

— Jeff McBrayer, Partner
Journey Technology Solutions, LLC

"RocketFailover has saved me well into the thousands just in the past month. Thank you Akative for the unsurpassed customer service and taking a personal interest in the success of my business."

— Joe Newlin, Owner/Operator
The Boonedock's

"We operate skilled nursing care facilities, and Internet connectivity is critical for our patient care. RocketFailover keeps us connected to our cloud-based electronic healthcare records system when our primary Internet service provider has an outage."

— Christy Hofsaess, Vice President of Finance
Hawkeye Care Centers of Iowa

"I was paying for one Verizon hotspot, not to mention the second hotspot I had to purchase for going over the "unlimited" data on the first hotspot. When I'm working in the courtroom or in the evenings for production, consuming over the data cap is common. InternetAnywhere gives me more than enough WiFi at a nominal monthly cost. The equipment was more than worth the cost of my work style and demands."

— Reagan Evans, Court Reporter

And Our Customers Love Us!

Join Our Valued Customers



For a FREE demo or custom quote, call us at
866-950-3392 or email Sales@Akative.com.



1-866-950-3392
Sales@Akative.com
Akative.com

2022